



DESCALING



PART 2

SW25

STEEL WORK NOZZLES



ROLLS COOLING AND PICKLING





PNR ITALIA

PNR ITALIA, with over 40 years experience, is a world wide leader in spray technology offering general and specialized products for all industrial sectors.

Resulting from our years of success, **PNR** offers a complete range of product directed at the Steel Works Industry. From Continuous Casting, Hot Rolling, Pickling, **PNR** has the products for Dust Suppression, Primary/Secondary Cooling, Pollution Control, Steel Cutting and complete Water Treatment Filtration. (this follows the Index pages 6-7)

PNR support surpasses others and starts at our Corporate Headquarters in Voghera, Italy with manufacturing, technical department, up to date computer software, ISO Certified (the ISO cert could be located on the bottom of this page as well), and laboratory (open to customer visits).

You are also personally supported by **PNR's** commercial branches in many countries in Europe, Asia and North America, as well as, our many distributors world wide.

We encourage you to visit www.pnr.eu to learn more about how **PNR** is your correct choice for Industrial Spray Nozzles.

All PNR catalogues are available for download:

CTG SW	Steelworks nozzles
CTG UG	Spray systems for industrial applications
CTG LS	Tank washing systems
CTG AZ	Air-assisted atomizers
CTG LN	Cooling lances
CTG SP	Spray drying nozzles
CTG PM	Paper mill nozzles
CTG AC	Assembly parts and complementary products
CTG KL	Cleaning and washing technologies
CTG FF	Fire-fighting products and systems

Our products are constantly reviewed and adapted to the current most modern technical level. Therefore our documentation is updated accordingly and sent to customers registered on our mailing list. To be included in this list you can send us your request with your exact e-mail or physical address.

DNV QUALITY SYSTEM

Our Company qualified its Quality Management System in compliance with the ISO 9001/2000 Norms.



DET NORSKE VERITAS

QUALITY MANAGEMENT SYSTEM CERTIFICATE

Certificato No. / Certificate No. **CERT-04111-99-AQ-MIL-SINCERT**

Si attesta che / This certifies that

Il sistema di gestione per la qualità di / the quality management system of

PNR ITALIA S.r.l.

Via Gandini, 2 - 27058 Voghera (PV) - Italy

È conforme ai requisiti della norma per i sistemi di gestione per la qualità
Conforms to the quality management systems standard

UNI EN ISO 9001:2008 (ISO 9001:2008)

Questa certificazione è valida per il seguente campo applicativo:
This certificate is valid for the following products or services:

(Ulteriori chiarimenti riguardanti lo scopo e l'applicabilità dei requisiti della normativa si possono ottenere consultando l'organizzazione certificata)
(Further clarifications regarding the scope and the applicability of the requirements of the standard(s) may be obtained by consulting the certified organization)

**Progettazione e produzione di spruzzatori ed atomizzatori pneumatici per applicazioni industriali
e di teste rotanti per lavaggio serbatoi**

**Design and manufacture of spray nozzles and air assisted atomizers for industrial applications
and tank washing rotating heads**

Data Prima Emissione
First Issue Date
1999-03-09

Luogo e data
Place and date
Agrate Brianza, (MB) 2012-01-05

Settore EA: 17 - 14

Franco Donina
Lead Auditor



Data di scadenza
Expiry Date
2015-02-03

per l'Organismo di Certificazione
for the Accredited Unit
DET NORSKE VERITAS ITALIA S.R.L.


Zeno Beltrami
Management Representative

La validità del presente certificato è subordinata a sorveglianza periodica (ogni 6, 9 o 12 mesi) e al riesame completo del sistema con periodicità triennale
The validity of this certificate is subject to periodical audits (every 6, 9 or 12 months) and the complete re-assessment of the system every three years
Le aziende in possesso di un certificato valido sono presenti nella banca dati del sito internet www.dnv.it ed www.accredia.it - All the companies with a valid certificate are online at the following address: www.dnv.it and www.accredia.it

PRODUCT IDENTIFICATION

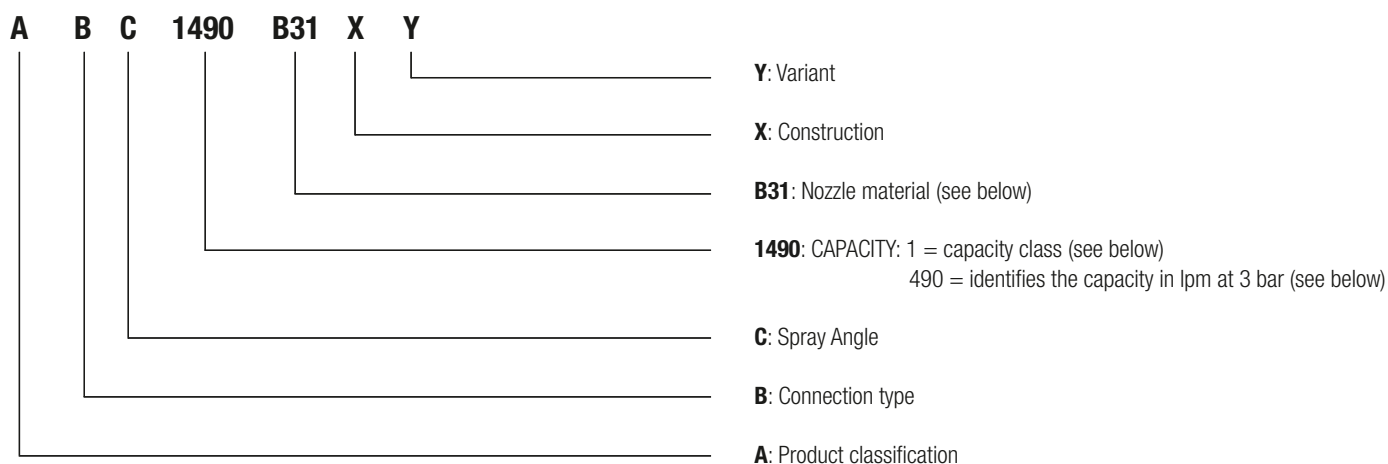
PNR CODING SYSTEM

Every industrial product needs to be identified with a code to avoid mistakes.

PNR product coding system was conceived to meet the following requirements:

- codes are easily listed by a computer in alphabetical order.
- codes fully describe the product, with no need of further information.
- codes immediately provide the main characteristics of each product so to find it in the catalogue easily.

Code Definition is as follows:



Flow rate capacity at 3 bars.

These codes are purely indicative, their meaning may be occasionally different. Please always refer to the numeric indication of the angles beside each table.

CAPACITY CLASS

Class	Numbers	Capacity in lpm
0	0 490	0,49
1	1 490	4,90
2	2 490	49,0
3	3 490	490
4	4 490	4900

COMMON SPRAY ANGLES

A = 0°	L = 40°	T = 80°
B = 15°	M = 45°	U = 90°
C = 20°	N = 50°	J = 110°
D = 25°	Q = 60°	W = 120°
F = 30°	R = 65°	Y = 130°
H = 35°	S = 75°	Z = 180°

PNR PRODUCTS MATERIALS CODES

A1	Carbon steel
A2	High speed steel
A8	Zinc coated steel
A9	Nickel coated steel
B1	Stainless steel AISI 303
B2	Stainless steel AISI 304
B21	Stainless steel AISI 304L
B3	Stainless steel AISI 316
B31	Stainless steel AISI 316L
C1	Stainless steel AISI 420 hardened
C2	Stainless steel AISI 416, hardened
D1	Polyvinylchloride (PVC)
D2	Polypropylene (PP)
D3	Polyamide (PA)

D5	Talcum filled Polypropylene
D6	Glassfibre reinforced PP
D7	High density polyethylene
D8	Polyvinylidene fluoride (PVDF)
E0	EPDM
E1	Polytetrafluorethylene (PTFE)
E2	PTFE (25% glassfibers)
E31	Acetalic resin (POM)
E7	Viton
E8	Synthetic rubber (NBR)
F1	Tungsten carbide
F5	Ceramic
F31	Ruby insert, 303 body
G1	Cast iron

H1	Titanium
L1	Monel 400
L2	Incolloy 825
L8	Hastelloy C276
P6	Acr. But. Styrene (ABS)
P8	EPDM 40 Shore
T1	Brass
T2	Brass, chrome plated
T3	Copper
T5	Bronze
T8	Brass, nickel plated
T81	Brass, electroless nickel plated
V1	Aluminum
V7	Aluminum, electroless n. plated

LIST OF ABBREVIATIONS - LEGENDA

AI	Inlet air capacity	Nmc/min
AO	Outlet air capacity	Nmc/min
CL	Spray jet deflection angle	degrees
D	Nozzle orifice conventional diameter	mm
D1	Minimum internal passage diameter	mm
DE	Supply passage diameter	mm
DF	Flange size	inch
DIA	Outer diameter	mm
DN	Flange nominal size	mm
DU	Outlet orifice diameter	mm
DX	Nipple inside diameter	mm
FF	Flange outer diameter	mm
G	Flange holes centre to centre diameter	mm
H, H1, H2	Height	mm

L, L1	Length	mm
LF	Pipe length	m
LP	Maximum operating pressure	bar
LQ	Maximum capacity	lpm
LT	Maximum operating temperature	°C
NR	Number of orifices	-
QC	Quick coupling connection	-
RA	Range	mm
RF	Cylindrical female thread BSP	inch
RG	Conic male thread BSPT	inch
S	Thickness	mm
SQ	Square bar size	mm
W	Weight	gr, kg
WS	Hexagon key	mm

PRODUCT WARRANTY

PNR products will be replaced or repaired at the option of PNR and free of charges if found defective in manufacturing, labelling or packaging. The above warranty conditions will apply if notice of defect is received by PNR within 30 days from date of product installations or one year from date of shipment. The cost of above said replacement or repair shall be the exclusive remedy for any breach of any warranty, and PNR shall not be held liable for any damage due to personal injuries or commercial losses coming from product malfunction.

Our Company Procedure for warranty cases requires the following steps to be performed:

- 1 Contact our Quality manager and obtain from PNR a return authorization number
- 2 Return the products together with our Form 3DA A04 duly completed
- 3 PNR shall issue a test report, send you a copy and return the product repaired or replaced

Our Company scope is to offer full Customer satisfaction, and we are fully aware of the inconvenience which can be originated from a defective product. Please be assured we shall do our best to make available a perfect product in the shortest possible time.

PRODUCT RETURN POLICY

PRODUCTS DELIVERED IN ERROR FROM PNR

- 1 Obtain from PNR a return authorization number.
- 2 Return the products together with our Form 3DA A04 duly completed.
- 3 PNR shall issue a Credit Note for full Product and shipping costs.

PRODUCTS ORDERED INCORRECTLY TO PNR

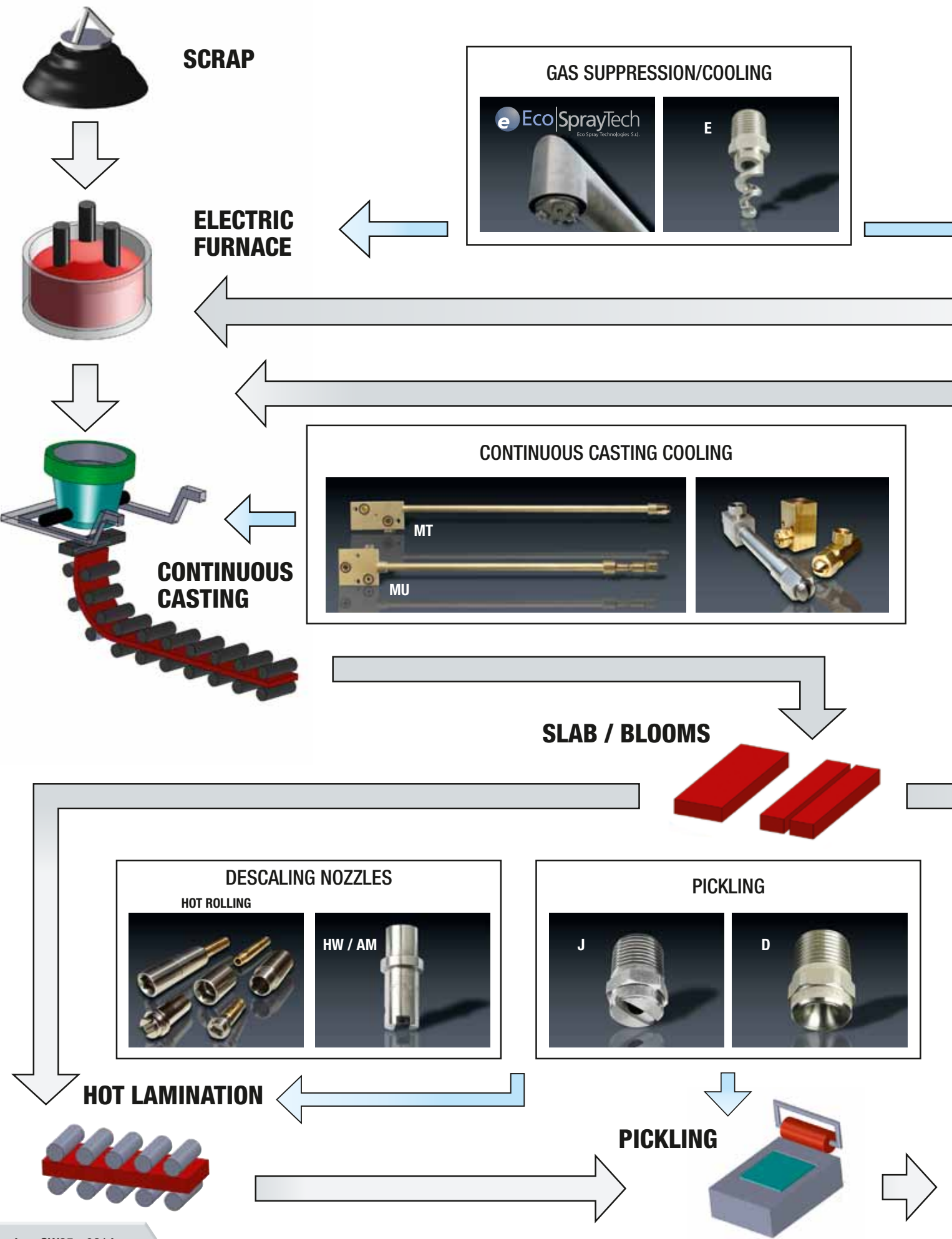
- 1 Obtain from PNR a return authorization number.
- 2 Return the products at your expense together with the form 3DA A04 duly completed.
- 3 Products shall be returned in original condition, inside the original packaging
- 4 A re-stocking change of 15% applies.

NON CATALOG PRODUCTS

These products can only be returned after a written authorisation from PNR has been obtained.

DISCLAIMER

Our products are manufactured with the best care and according to the latest developments of the technology, but we cannot assure that every one of our products is perfectly fit for any possible specific process. The information in this Catalogue is provided "as is" and we make no warranty of any kind with respect to the subject matter or accuracy of the information contained herein. This publication may include technical inaccuracies or typographical errors and changes may be periodically made to the information herein without prior notice.



DUST SUPPRESSION ON RAW MATERIALS PARK



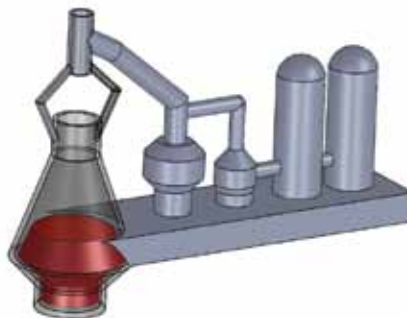
RAW MATERIALS



BASIC OXIGEN CONVERTER



BLAST FURNACE



COKE COOLING



COLD LAMINATION



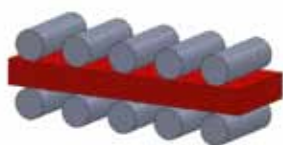
COILS



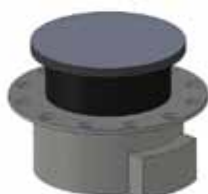
ROLLS COOLING



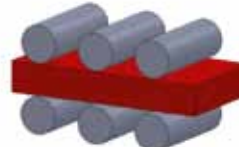
COLD LAMINATION



ANNEALING



TEMPER



COILS



	Page
ISO 9001:2000 CERTIFICATION	1
PRODUCT IDENTIFICATION	2
GENERAL INFORMATION	3
NOZZLES IN STEELWORKS	4

DESCALING

- Descaling Principles - Descaling nozzles feature - Impact measurement	38
- Model "GW" - Dove tail nozzle tips	40
Assembly parts GW	41
- Model "HW/AH" - Short nozzles - Standard size	42
Assembly parts HW/AH	43
- Model "HW/AA" - Nozzle tips, mini-sized	44
Assembly parts HW/AA	45
- Model "HW/AK" - High impact nozzle tips, standard-sized	46
Assembly parts HW/AK	47
- Model "HW/AB" - High impact nozzle tips, mini-sized	48
Assembly parts HW/AB	49
- Model "HV/AH" - High impact nozzle tips, special-sized	50
Assembly parts HV/AH	51
- Model "HW/AM" - High impact nozzle tips, micro-sized	52
Assembly parts HW/AM	53



	Page
COLD ROLLING / PICKLING	
- Model "J (H - USA MARKET)" - Flat fan jet nozzle	54
ROLLS COOLING	
- Model "KYA" - Rolls cooling nozzle	57
- Model "UEA D020" - Air knife cooling systems round jet	58
- Model "UEA L022" - Air knife cooling systems flat fan jet	59
- Model "UEB" - Air knife cooling systems bar blowers	60



We regret not being able to update our customers on the continuous improvements to our product range, so please consider the information and product specifications supplied in this catalogue as indicative and not binding for our company. For each application that requires one or more characteristics of one of our catalogue products that must be strictly maintained, please kindly ask for a written confirmation. Any information contained in this Catalogue, codes and product specifications, sketches, drawings and photographs, is the exclusive property of Flowtech Srl and it is forbidden to reproduce it in any medium without express written permission of the same.

All dimensions in this catalogue are in millimetres (mm). All threads to be manufactured according to ISO 228 unless otherwise specified.

(European Standard BS 2779 - DIN 259 - UNI 338).

All trademarks mentioned in this catalogue are owned by their respective owners.

DESCALING

DESCALING PRINCIPLES

The descaling process is crucial in steel industry to obtain higher quality products. Descaling nozzles are used for an efficient scale removal in hot rolling. The best method is the hydro-mechanical descaling process using high pressure water jets formed by special descaling nozzles. Working pressure range is from 50 to 400 bar (725 to 5.800 psi), for GW type from 30 to 200 bar (435 to 2.900 psi). The impact of the water jet on the steel hot surface produces an impact force that, combined with the thermal action due to the temperature difference between jets and slabs, generates the descaling effect. The jet quality of the nozzle has a great effect upon the steel surface descaling in hot-rolling and is crucial for the quality of the final product.

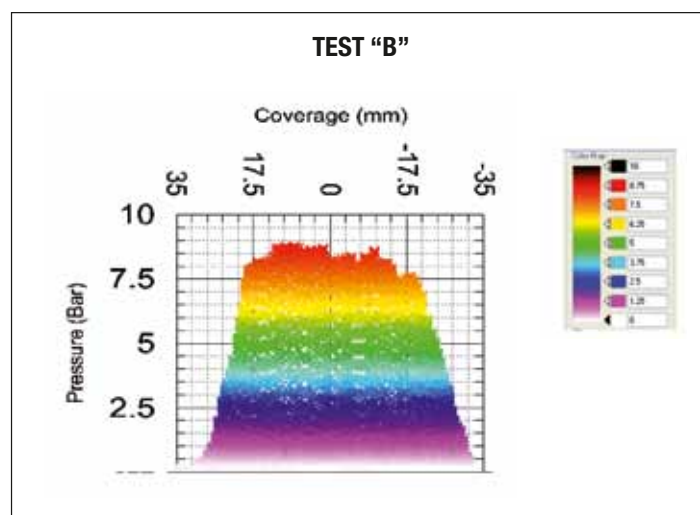
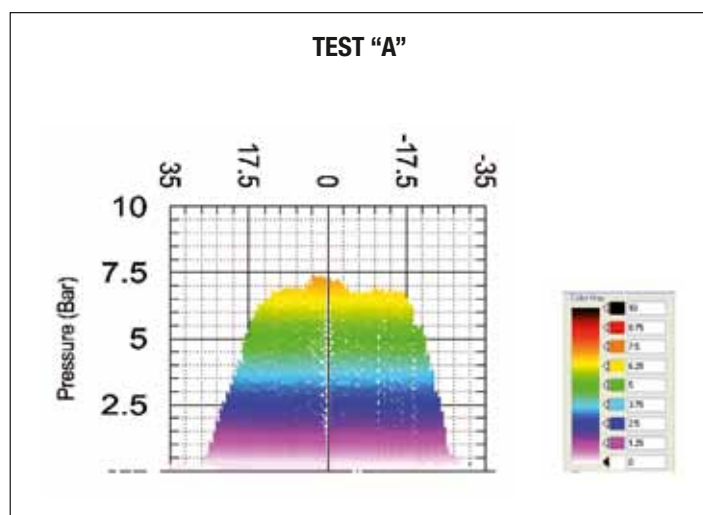
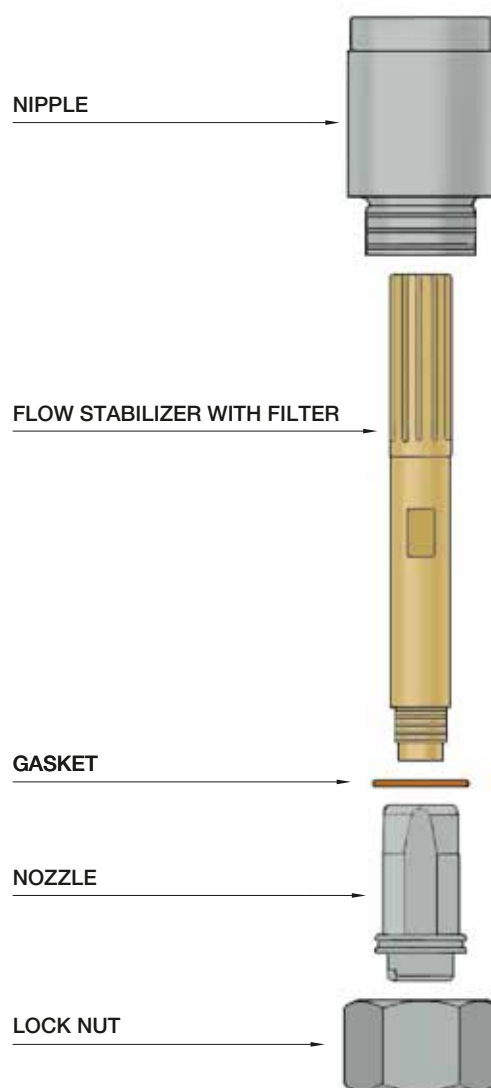
DESCALING NOZZLES FEATURE

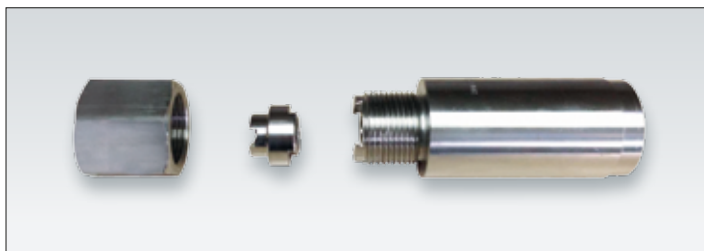
An efficient scale removal requires the use of proper nozzle designed and manufactured with a special internal profile to provide high values of impact and a consistent flow jet spray along the descaling process. The general composition of a descaling nozzle is shown in the picture at the right. Only GW type is different, as it is integrated only by nipple, nozzle and locknut.

IMPACT MEASUREMENT

Our descaling nozzles are tested by means of a three-dimensional testing machine that measures the spray jet impact and distribution. A load cell, placed at the bottom of the nozzle, moves along the path of the spray jet measuring its force of impact millimeter by millimeter.

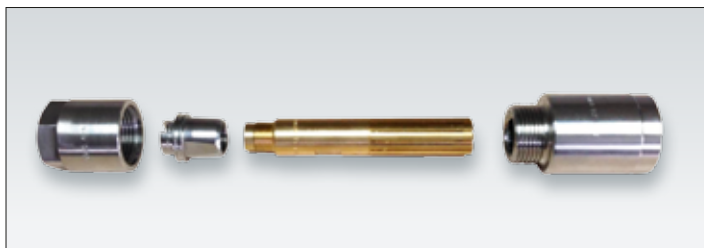
The pressure values with respect to the surface to be descaled, angle of inclination and offset angle, can be varied according to the technical specifications required by customers.



**GW Type**

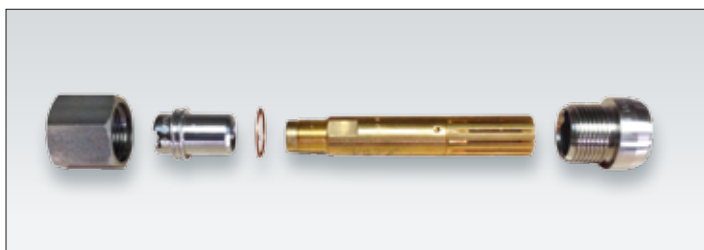
Dovetail nozzles

pag. 40

**HW / AH Type**

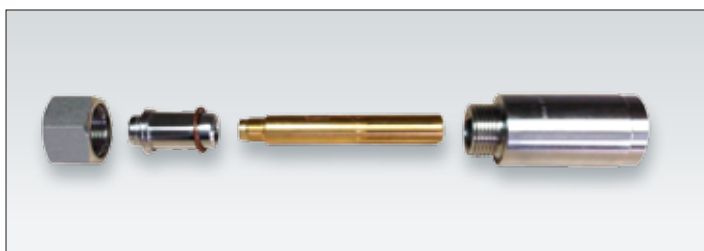
Short Nozzles - Standard size

pag. 42

**HW / AA Type**

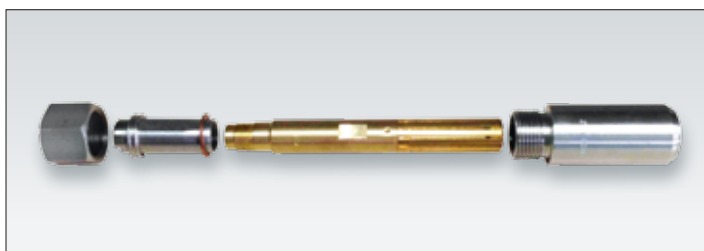
Short Nozzles - Mini Size

pag. 44

**HW / AK Type**

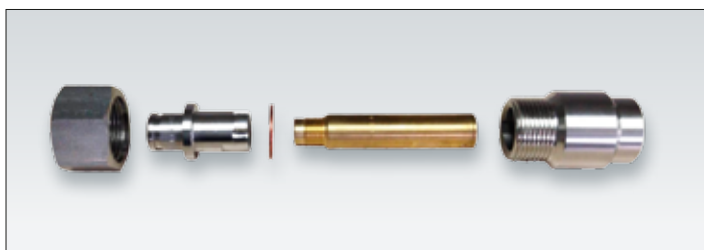
High Impact - Standard Size

pag. 46

**HW / AB Type**

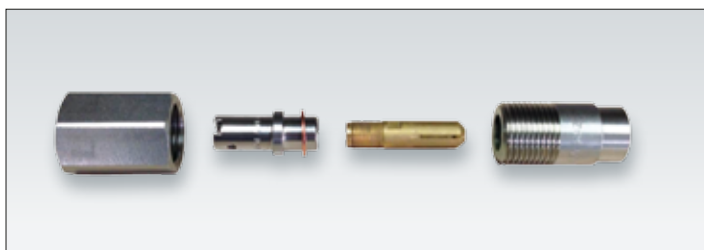
High Impact - Mini Size

pag. 48

**HV / AH Type**

High Impact - Special Size

pag. 50

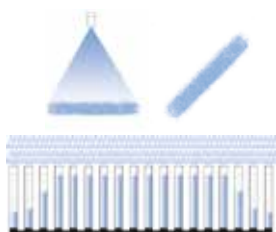
**HW / AM Type**

High Impact - Micro Size

pag. 52



SPRAY PATTERN



DOVE-TAIL NOZZLES

GW series nozzles have been the worldwide standard for many years in hot descaling mills. They have undergone many improvements, specifically to the inner orifice profile, resulting in a very even distribution of the water jet impact onto the steel surface. Their typical design with a dove-tail coupling between nipple and nozzle tip assures for correct alignment of the nozzle onto the spray manifold. Several nipples length value and a specific locknut allow for a wide choice of different assembly dimensions.

SPRAY ANGLE CODES

GWC	GWE	GWF	GWL
22°	26°	30°	40°

MATERIALS

WEIGHT (Kg)

C1	Body	Stainless steel AISI 303	0.07*
	Insert	Stainless steel AISI 420 hardened	
F1	Body	Stainless steel AISI 303	0.08*
	Insert	Tungsten carbide	

* Average Value

HOW TO ORDER PNR PRODUCTS

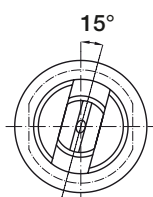
Model	Angle	Capacity	Material
GW	C	2162	XX

Order example: **GW 2162 C1**

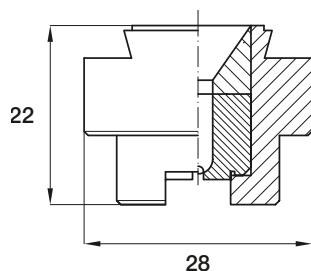
D = Nozzle orifice conventional diameter (mm)

D₁ = Minimum internal passage diameter (mm)

OFFSET ANGLE



DIMENSIONS



Code	D mm	D1 mm	Capacity - lpm							
			Pressure - bar							
			80	90	100	120	140	160	180	200
2162xx	2.0	1.5	16.2	17.1	18.0	19.5	21.3	22.8	24.0	25.0
2208xx	2.1	1.8	20.8	21.8	23.0	25.2	27.2	29.1	30.8	35.5
2250xx	2.5	1.9	25.0	26.5	28.0	31.0	33.0	35.4	37.5	39.0
2320xx	2.8	2.4	32.0	34.2	36.0	39.4	42.6	45.5	48.3	50.9
2402xx	3.0	2.5	40.2	42.7	45.0	49.0	53.0	57.0	60.0	63.0
2520xx	3.5	2.7	52.0	55.0	58.0	63.5	68.6	73.3	77.8	82.0
2642xx	3.8	3.2	64.2	68.3	72.0	78.0	85.0	91.0	96.0	101
2798xx	4.3	3.6	79.8	84.4	89.0	98.0	105	112	119	126
2996xx	4.7	4.0	99.6	106	112	122	132	141	150	158
3112xx	5.0	4.2	112	119	125	137	148	158	168	177
3120xx	5.2	4.4	120	127	134	147	158	169	180	189

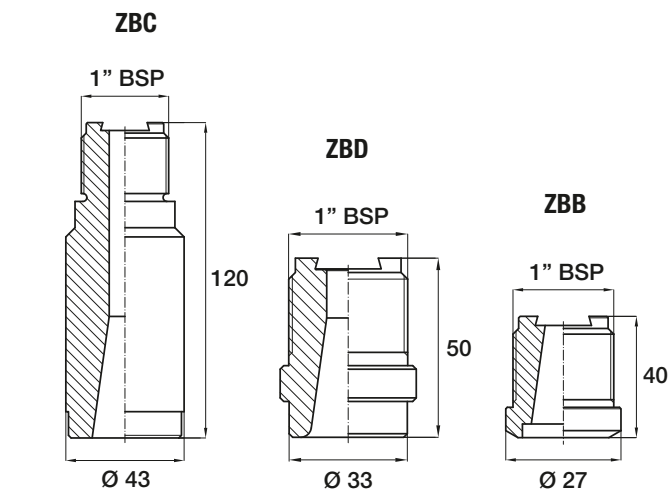
CONVERSION TABLE (UE - USA)

PRESSURE: 1 bar = 14,5 psi	CAPACITY: 1 lpm = 0,264 gpm
----------------------------	-----------------------------



ZB NIPPLES

ZB series welding nipples have been designed for the assembling of GW descaling tips onto main manifolds. The accurately machined dove-tail profile assures for precise alignment of the nozzle tip with respect to the axis of the spray manifold. The contact area with the nozzle tip shows a surface machined to an accurate finish to prevent leakage between nipple and nozzle tip. ZB nipples are available in three length values to match different dimensional requirements.



MATERIALS

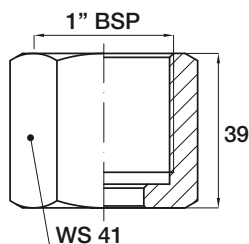
B31 Stainless steel AISI 316L

Code	RG inch	L mm	Weight Kg
ZBB 0100 B3	1	40	0.18
ZBC 0100 B3	1	120	0.90
ZBD 0100 B3	1	50	0.22



VAA 1001 B1B

The VAA 1001 B1B cap is designed for the proper assembly between ZB nipples and GW descaling nozzle tips. The strong design assures for a safe operation under the high pressure values typically used in hot descaling mill systems.



MATERIALS

WEIGHT (Kg)

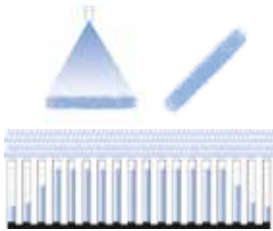
B1 Stainless steel AISI 303

0.22*

* Average Value



SPRAY PATTERN



SPRAY ANGLE CODES

HWC	HWE	HWF	HWL
22°	26°	30°	40°

MATERIALS

WEIGHT (Kg)

C1	Body	Stainless steel AISI 303	0.08*
	Insert	Stainless steel AISI 420 hardened	
F1	Body	Stainless steel AISI 303	0.09*
	Insert	Tungsten carbide	

* Average Value

HOW TO ORDER PNR PRODUCTS

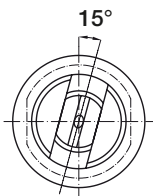
Model	Spray Angle	Capacity	Material
HW/AH	C	2045	XX

Order example: HWC 2045 F1AH

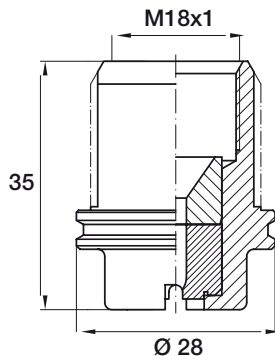
D = Nozzle orifice conventional diameter (mm)

D₁ = Minimum internal passage diameter (mm)

OFFSET ANGLE



DIMENSIONS



Code	D mm	D1 mm	Capacity - lpm									
			Pressure - bar									
			80	100	140	200	240	280	300	340	380	400
2045 xxAH	0.7	0.6	4.5	5.0	5.9	7.2	7.8	8.5	8.7	9.3	9.8	10.0
2063 xxAH	1.0	0.8	6.3	7.0	8.3	10.0	10.9	11.8	12.2	13.0	13.7	14.1
2106 xxAH	1.5	1.2	10.6	11.9	14.2	16.8	18.4	19.8	20.5	21.8	23.1	23.7
2134 xxAH	1.8	1.4	13.4	15.0	17.7	21.2	23.2	25.0	25.9	27.6	29.2	29.9
2162 xxAH	2.0	1.5	16.2	18.1	21.4	25.6	28.0	30.3	31.4	33.4	35.3	36.2
2208 xxAH	2.1	1.8	20.8	23.3	27.5	32.9	36.0	38.9	40.2	42.9	45.3	46.5
2250 xxAH	2.5	1.9	25.0	28.0	33.0	39.5	43.3	46.8	48.4	51.6	54.5	55.9
2320 xxAH	2.8	2.4	32.0	35.8	42.3	50.6	55.4	59.9	62.0	66.0	69.7	71.6
2402 xxAH	3.0	2.5	40.2	45.0	53.2	63.6	69.6	75.2	77.8	82.9	87.6	89.9
2520 xxAH	3.5	2.7	52.0	58.1	68.8	82.2	90.0	97.3	100.7	107.2	113.3	116.3
2642 xxAH	3.8	3.2	64.2	71.8	84.9	101.5	111.2	120.1	124.3	132.3	140.0	143.6
2798 xxAH	4.3	3.6	79.8	89.2	105.6	126.0	138.2	149.3	154.5	164.5	174.0	178.4
2996 xxAH	4.7	4.0	99.6	111.3	131.8	157.5	172.5	186.3	192.8	205.3	217.0	222.7
3112 xxAH	5.0	4.2	112.0	125.2	148.2	177.0	194.0	209.5	216.9	231.0	244.0	250.4
3120 xxAH	5.2	4.4	120.0	134.2	158.7	189.7	207.8	224.5	232.4	247.4	261.5	268.3

ALIGNMENT NOZZLE



Alignment blind nozzle HWZ 01Cx B1 allows for fast and safe positioning of the nipple on the manifold prior to welding. The nipple is aligned in place by means of a straight rod and welded to assure the right jet direction.



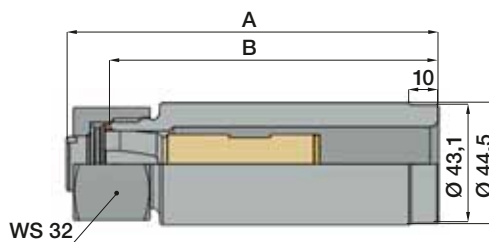
DISASSEMBLY KIT

Nozzle tip is strongly secured to the nipple and its removal is not always easy and can cause damage to both parts. HWZ 05B0 B1 disassembling kit allows a safe gripping of the nozzle and makes it easier to apply the tensile strength required to extract it from inside the nipple, for replacement and inspection. The kit is sold separately. Ask for the technical data sheet to select the correct tip for the required alignment angle.

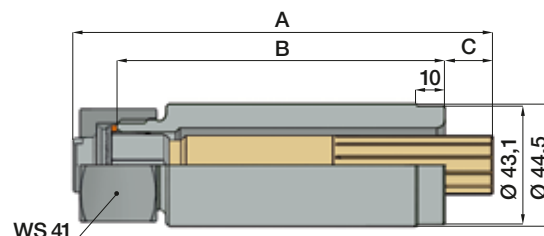
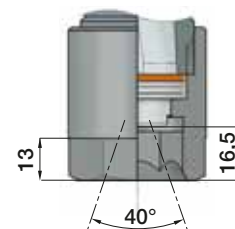
NUT	VAW B100 B1								
NIPPLE	ZWB 0073 B2			ZWB 0100 B2			ZWB 0120 B2		
STABILIZER	A	B	C	A	B	C	A	B	C
XHW CG10 T1				116	100		136	120	
XHW CG20 T1							136	120	

A = Complete Descaling unit Length (mm)
B = Welding Nipple Length (mm)
C = Flow Straightener Protrusion (mm)

NUT	VAW B100 B1								
NIPPLE	ZWB 0073 B2			ZWB 0100 B2			ZWB 0120 B2		
STABILIZER	A	B	C	A	B	C	A	B	C
XHW CG10 T1	97	73	10						
XHW CG20 T1	133	73	34	133	100	17			
XHW CG21 T1	153	73	54	153	100	37	153	120	17

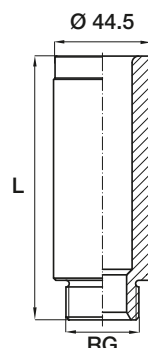


NUT VAW D100 B1



WELDING NIPPLE

HW nozzles can be assembled on a variety of different nipples, with the same inlet, but with different lengths. The precision machined nipple inlet port assures precise positioning of the nozzle flat fan jet to the specified offset angle value of 15° with regard to manifold center line. This makes it possible to obtain uniform impact distribution yielding better decaling results.



MATERIALS

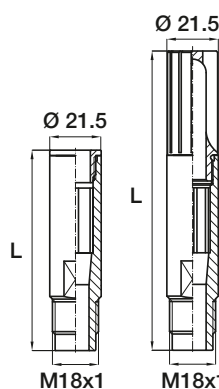
B2	Stainless steel AISI 304
B3	Stainless steel AISI 316L

Code	RG inch	L mm	Weight Kg
ZWB 0073 B2	1	73	0.49
ZWB 0100 B2	1	100	0.71
ZWB 0120 B2	1	120	0.85



FLOW STABILIZER

The flow stabilizer is a critical component for proper descaling, by reducing flow turbulence losses, a larger fraction of the water flow energy can be used for generating impact on the surface to be descaled. The design consists of a cylindrical brass body with a polished inner surface, housing a cast stainless steel flow stabilizer which straightens the liquid path to minimize turbulences. Different length nipples are available, with or without inlet filter. The codes always include a multifin flow straightener.



MATERIALS

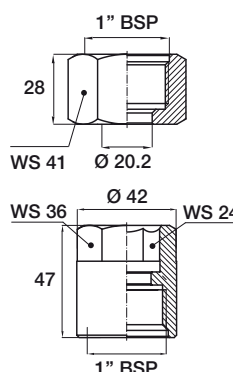
T1	Body	Brass
	Filter	Brass
	Flow stabilizer	Stainless steel AISI 316

Code	L mm	Weight Kg	Notes
XHW CG10 T1	74	0.12	without filter
XHW CG20 T1	110.5	0.18	with filter
XHW CG21 T1	130.5	0.20	with filter



LOCKNUTS

The VAW B 100 B1 and VAW D 100 B1 locknuts for ZWB series descaling nipples have been designed profiting from a large experience on the field. The sturdy design and the generous dimensions give the maximum protection to the nozzle and the nipple thread. One locknut size fits all standard size ZWB series nipple of any length.



MATERIALS

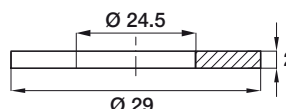
B1	Stainless steel AISI 303
-----------	--------------------------

Code	Notes	Weight Kg
VAW B100 B1	Outside exagone	0.16
VAW D100 B1	Built in exagone	0.25



GASKET

The VDA 24C1 T3 round gasket provides proper assembly between nozzle and nipple. One size fits all standard size ZWB nipple types.



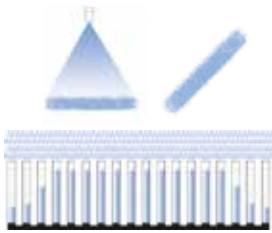
MATERIALS

T3	Copper
-----------	--------

Code
VDA 24C1 T3



SPRAY PATTERN



SHORT NOZZLES - MINI SIZE

The modern design of these nozzle offers the same advantage as the full size HW nozzles. In addition it makes possible to use a smaller pitch between the nozzles allowing for a higher impact value per unit length. The nozzle efficiency is enhanced by means of a carefully designed flow stabilizer, which minimizes turbulence due to sharp direction change at the inlet from the main manifold. Provision is also made for a filter to be mounted at the nozzle inlet, minimizing nozzle clogging and abrasion.

SPRAY ANGLE CODES

HWC	HWE	HWF	HWL
22°	26°	30°	40°

MATERIALS

WEIGHT (Kg)

C1	Body	Stainless steel AISI 303	0.07*
	Insert	Stainless steel AISI 420 hardened	
F1	Body	Stainless steel AISI 303	0.08*
	Insert	Tungsten carbide	

* Average Value

HOW TO ORDER PNR PRODUCTS

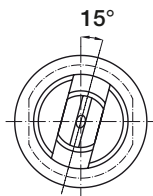
Model	Angle	Capacity	Material
HW/AA	C	2045	XX

Order example: HWC 2045 F1AA

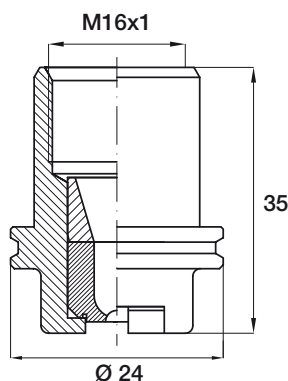
D = Nozzle orifice conventional diameter (mm)

D₁ = Minimum internal passage diameter (mm)

OFFSET ANGLE



DIMENSIONS



Code	D	D1	Capacity - lpm									
			Pressure - bar									
	mm	mm	80	100	140	200	240	280	300	340	380	400
2045 xxAA	0.7	0.6	4.5	5.0	5.9	7.2	7.8	8.5	8.7	9.3	9.8	10.0
2063 xxAA	1.0	0.8	6.3	7.0	8.3	10.0	10.9	11.8	12.2	13	13.7	14.1
2106 xxAA	1.5	1.2	10.6	11.9	14.2	16.8	18.4	19.8	20.5	21.8	23.1	23.7
2134 xxAA	1.8	1.4	13.4	15.0	17.7	21.2	23.2	25.0	25.9	27.6	29.2	29.9
2162 xxAA	2.0	1.5	16.2	18.1	21.4	25.6	28.0	30.3	31.4	33.4	35.3	36.2
2208 xxAA	2.1	1.8	20.8	23.3	27.5	32.9	36.0	38.9	40.2	42.9	45.3	46.5
2250 xxAA	2.5	1.9	25.0	28.0	33.0	39.5	43.3	46.8	48.4	51.6	54.5	55.9
2320 xxAA	2.8	2.4	32.0	35.8	42.3	50.6	55.4	59.9	62.0	66.0	69.7	71.6
2402 xxAA	3.0	2.5	40.2	45.0	53.2	63.6	69.6	75.2	77.8	82.9	87.6	89.9
2520 xxAA	3.5	2.7	52.0	58.1	68.8	82.2	90.0	97.3	100.7	107.2	113.3	116.3
2642 xxAA	3.8	3.2	64.2	71.8	84.9	101.5	111.2	120.1	124.3	132.3	140.0	143.6
2798 xxAA	4.3	3.6	79.8	89.2	105.6	126.0	138.2	149.3	154.5	164.5	174.0	178.4
2996 xxAA	4.7	4.0	99.6	111.3	131.8	157.5	172.5	186.3	192.8	205.3	217.0	222.7
3112 xxAA	5.0	4.2	112.0	125.2	148.2	177.0	194.0	209.5	216.9	231.0	244.0	250.4
3120 xxAA	5.2	4.4	120.0	134.2	158.7	189.7	207.8	224.5	232.4	247.4	261.5	268.3

ALIGNMENT NOZZLE



Alignment blind nozzle HWZ 01AxB1 allows for fast and safe positioning of the nipple on the manifold prior to welding. The nipple is aligned in place by means of a straight rod and welded to assure the right jet direction.

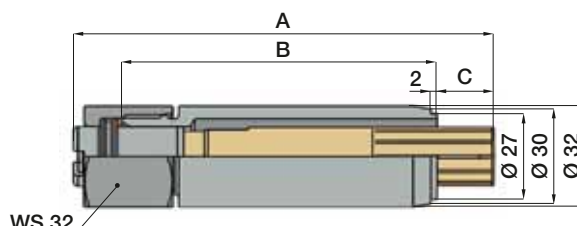


DISASSEMBLY KIT

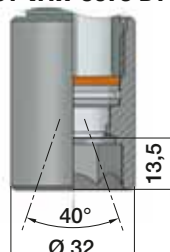
Nozzle tip is strongly secured to the nipple and its removal is not always easy and can cause damage to both parts. HWZ 05A0 B1 disassembling kit allows a safe gripping of the nozzle and makes it easier to apply the tensile strength required to extract it from inside the nipple, for replacement and inspection. The kit is sold separately. Ask for the technical data sheet to select the correct tip for the required alignment angle.

NUT	VAW A075 B1								
NIPPLE	ZWA 0032 B2			ZWA 0039 B2			ZWA 0080 B2		
STABILIZER	A	B	C	A	B	C	A	B	C
XHW AG10 T1	97	32	49	97	39	42	97	80	2
XHW AG20 T1	133	32	86.5	133	39	79.5	133	80	38.5
XHW AG21 T1	153	32	106.5	153	39	99.5	153	80	58.5

A = Complete Descaling unit Length (mm)
B = Welding Nipple Length (mm)
C = Flow Straightener Protrusion (mm)



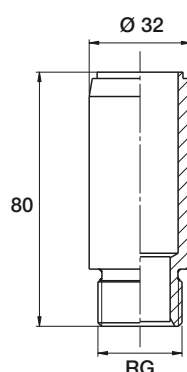
NUT VAW C075 B1



ZWA

WELDING NIPPLES

HW small size nozzles can be assembled on a variety of welding nipples, with same inlet, and different lengths. The precision machined nipple inlet port assures precise positioning of the nozzle flat fan jet to the specified offset angle value of 15° with regard to manifold center line. This makes possible to obtain uniform impact distribution yielding better decaling results.



MATERIALS

B2	Stainless steel AISI 304
B3	Stainless steel AISI 316L

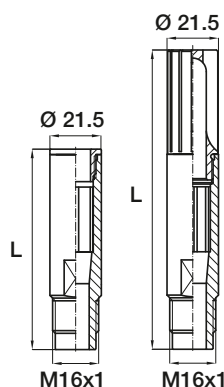
Code	RG inch	L mm	Weight Kg
ZWA 0032 B2	3/4	32	0.06
ZWA 0039 B2	3/4	39	0.08
ZWA 0080 B2	3/4	80	0.19



XHW

FLOW STABILIZER

The flow stabilizer is a critical component for proper descaling, by reducing flow turbulence losses, a larger fraction of the water flow energy can be used for generating impact on the surface to be descaled. The design consists of a cylindrical brass body with a polished inner surface, housing a cast stainless steel flow stabilizer which straightens the liquid path to minimize turbulences. Different length nipples are available, with or without inlet filter. The codes always include a multifin flow straightener.



MATERIALS

T1	Body	Brass
	Filter	Brass
	Flow stabilizer	Stainless steel AISI 316 L

Code	L mm	Weight Kg	Notes
XHW AG10 T1	74.0	0.09	without filter
XHW AG20 T1	110.5	0.14	with filter
XHW AG21 T1	130.5	0.16	with filter

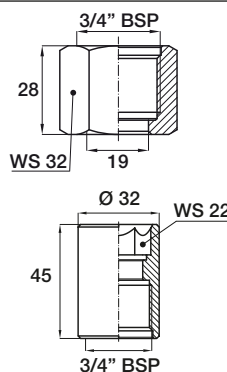


VAW A075 B1

VAW C075 B1

LOCKNUTS

The VAW A075 B1 and VAW C075 B1 locknuts for ZWA series descaling nipples have been designed profiting from a large experience on the field. The sturdy design and the generous dimensions give the maximum protection to the nozzle and the nipple thread. One locknut size fits all standard size ZWA series nipple of any length.



MATERIALS

B1	Stainless steel AISI 303
-----------	--------------------------

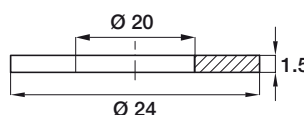
Code	Notes	Weight Kg
VAW A075 B1	Outside exagone	0.09
VAW C075 B1	Built in exagone	0.12



VDA 20C1 T3

GASKET

The VDA 20C1 T3 round gasket provides proper assembly between nozzle and nipple. One size fits all small size ZWA nipple types.



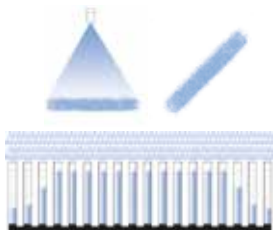
MATERIALS

T3	Copper
-----------	--------

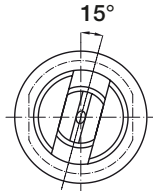
Code
VDA 20C1 T3



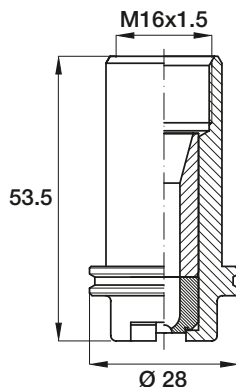
SPRAY PATTERN



OFFSET ANGLE



DIMENSIONS



HIGH IMPACT NOZZLES - STANDARD SIZE

The water path leading to the nozzle orifice has been completely redesigned to reduce energy losses caused by turbulence, all sharp cross section changes have been eliminated resulting in a significant increase in water velocity at the nozzle orifice.

The afore mentioned advantages are added to those offered by a carefully designed flow stabilizer and a filter when assembled to the nipple inlet, minimizing clogging and abrasion of the nozzle orifice.

SPRAY ANGLE CODES

HWC	HWE	HWF	HWL
22°	26°	30°	40°

MATERIALS

C1	Body	Stainless steel AISI 303	0.14*
	Insert	Stainless steel AISI 420 hardened	
F1	Body	Stainless steel AISI 303	0.15*
	Insert	Tungsten carbide	

* Average Value

HOW TO ORDER PNR PRODUCTS

Model	Spray Angle	Capacity	Material
HW/AK	C	2045	XX

Order example: **HWC 2045 F1AK**

D = Nozzle orifice conventional diameter (mm)

D_1 = Minimum internal passage diameter (mm)

Code	D mm	D1 mm	Capacity - lpm									
			Pressure - bar									
			80	100	140	200	240	280	300	340	380	400
2045 xxAK	0.7	0.6	4.5	5.0	5.9	7.2	7.8	8.5	8.7	9.3	9.8	10.0
2063 xxAK	1.0	0.8	6.3	7.0	8.3	10.0	10.9	11.8	12.2	13.0	13.7	14.1
2106 xxAK	1.5	1.2	10.6	11.9	14.2	16.8	18.4	19.8	20.5	21.8	23.1	23.7
2134 xxAK	1.8	1.4	13.4	15.0	17.7	21.2	23.2	25.0	25.9	27.6	29.2	29.9
2162 xxAK	2.0	1.5	16.2	18.1	21.4	25.6	28.0	30.3	31.4	33.4	35.3	36.2
2208 xxAK	2.1	1.8	20.8	23.3	27.5	32.9	36.0	38.9	40.2	42.9	45.3	46.5
2250 xxAK	2.5	1.9	25.0	28.0	33.0	39.5	43.3	46.8	48.4	51.6	54.5	55.9
2320 xxAK	2.8	2.4	32.0	35.8	42.3	50.6	55.4	59.9	62.0	66.0	69.7	71.6
2402 xxAK	3.0	2.5	40.2	45.0	53.2	63.6	69.6	75.2	77.8	82.9	87.6	89.9
2520 xxAK	3.5	2.7	52.0	58.1	68.8	82.2	90.0	97.3	100.7	107.2	113.3	116.3
2642 xxAK	3.8	3.2	64.2	71.8	84.9	101.5	111.2	120.1	124.3	132.3	140.0	143.6
2798 xxAK	4.3	3.6	79.8	89.2	105.6	126.0	138.2	149.3	154.5	164.5	174.0	178.4
2996 xxAK	4.7	4.0	99.6	111.3	131.8	157.5	172.5	186.3	192.8	205.3	217.0	222.7
3112 xxAK	5.0	4.2	112.0	125.2	148.2	177.0	194.0	209.5	216.9	231.0	244.0	250.4
3120 xxAK	5.2	4.4	120.0	134.2	158.7	189.7	207.8	224.5	232.4	247.4	261.5	268.3

ALIGNMENT NOZZLE

Alignment blind nozzle HWZ 01Cx B1 allows for fast and safe positioning of the nipple on the manifold prior to welding. The nipple is aligned in place by means of a straight rod and welded to assure the right jet direction.



DISASSEMBLY KIT

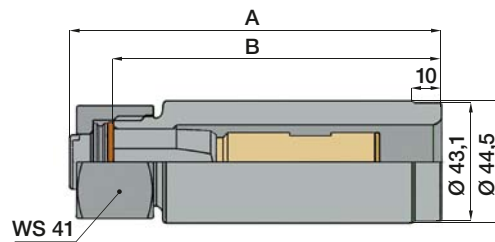
Nozzle tip is strongly secured to the nipple and its removal is not always easy and can cause damage to both parts. HWZ 05B0 B1 disassembling kit allows a safe gripping of the nozzle and makes it easier to apply the tensile strength required to extract it from inside the nipple, for replacement and inspection. The kit is sold separately. Ask for the technical data sheet to select the correct tip for the required alignment angle.



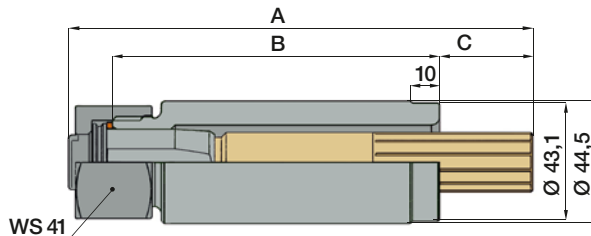
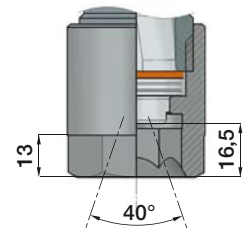
NUT	VAW B100 B1								
NIPPLE	ZWB 0073 B2			ZWB 0100 B2			ZWB 0120 B2		
STABILIZER	A	B	C	A	B	C	A	B	C
XHW DG10 T1				116	100		136	120	
XHW DG20 T1							136	120	

A = Complete Descaling unit Length (mm)
B = Welding Nipple Length (mm)
C = Flow Straightener Protrusion (mm)

NUT	VAW B100 B1								
NIPPLE	ZWB 0073 B2			ZWB 0100 B2			ZWB 0120 B2		
STABILIZER	A	B	C	A	B	C	A	B	C
XHW DG10 T1	116	73	26						
XHW DG20 T1	136	73	46	136	100	19			
XHW DG21 T1	149	73	60	149	100	33	149	120	13
XHW DG21 T1	169	73	80	169	100	53	169	120	33
XHW DG22 T1	189	73	100	189	100	73	189	120	53

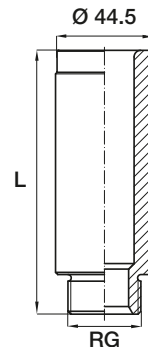


NUT VAW D100 B1



WELDING NIPPLES

HW nozzles can be assembled on a variety of different nipples, with the same inlet, but with different lengths. The precision machined nipple inlet port assures precise positioning of the nozzle flat fan jet to the specified offset angle value of 15° with regard to manifold center line. This makes it possible to obtain uniform impact distribution yielding better decaling results.



MATERIALS

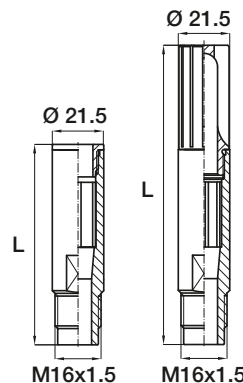
B2	Stainless steel AISI 304
B3	Stainless steel AISI 316L

Code	RG inch	L mm	Weight Kg
ZWB 0073 B2	1	73	0.48
ZWB 0100 B2	1	100	0.70
ZWB 0120 B2	1	120	0.84



FLOW STABILIZER

The flow stabilizer is a critical component for proper decaling, by reducing flow turbulence losses, a larger fraction of the water flow energy can be used for generating impact on the surface to be descaled. The design consists of a cylindrical brass body with a polished inner surface, housing a cast stainless steel flow stabilizer which straightens the liquid path to minimize turbulences. Different length nipples are available, with or without inlet filter. The codes always include a multifin flow straightener.



MATERIALS

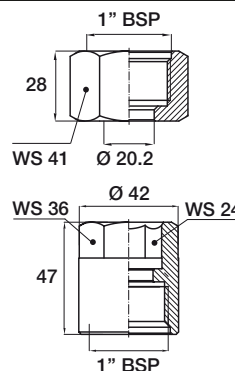
T1	Body	Brass	
	Filter	Brass	
	Flow stabilizer	Stainless steel AISI 316	

Code	L mm	Weight Kg	Notes
XHW DG 10 T1	76	0.08	without filter
XHW DG 11 T1	96	0.10	without filter
XHW DG 20 T1	110	0.12	with filter
XHW DG 21 T1	130	0.14	with filter
XHW DG 22 T1	150	0.15	with filter



LOCKNUTS

The VAW B 100 B1 and VAW D 100 B1 locknuts for ZWB series descaling nipples have been designed profiting from a large experience on the field. The sturdy design and the generous dimensions give the maximum protection to the nozzle and the nipple thread. One locknut size fits all standard size ZWB series nipple of any length.



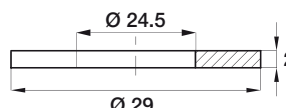
MATERIALS

B1	Stainless steel AISI 303	
Code	Notes	Weight Kg
VAW B100 B1	Outside exagone	0.16
VAW D100 B1	Built in exagone	0.24



GASKET

The VDA 24C1 T3 round gasket provides proper assembly between nozzle and nipple. One size fits all standard size ZWB nipple types.

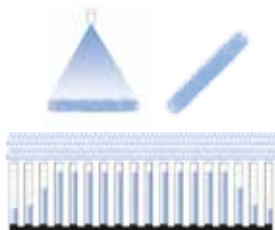


MATERIALS

T3	Copper
Code	
VDA 24C1 T3	



SPRAY PATTERN



HIGH IMPACT NOZZLES - MINI SIZE

The water path leading to the nozzle orifice has been completely redesigned to reduce energy losses caused by turbulence, all sharp cross section changes have been eliminated resulting in a significant increase in water velocity at the nozzle orifice.

The afore mentioned advantages are added to those offered by a carefully designed flow stabilizer and a filter when assembled to the nipple inlet, minimizing clogging and abrasion of the nozzle orifice.

SPRAY ANGLE CODES

HWC	HWE	HWF	HWL
22°	26°	30°	40°

MATERIALS

C1	Body	Stainless steel AISI 303	0.10*
	Insert	Stainless steel AISI 420 hardened	
F1	Body	Stainless steel AISI 303	0.11*
	Insert	Tungsten carbide	

* Average Value

HOW TO ORDER PNR PRODUCTS

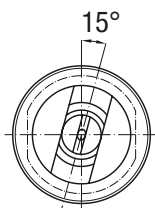
Model	Spray Angle	Capacity	Material
HW/AB	C	2045	XX

Order example: **HWC 2045 F1AB**

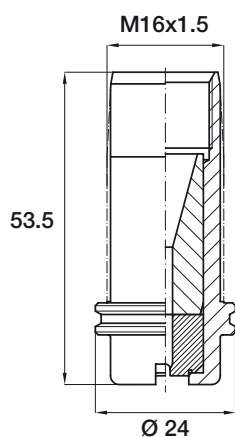
D = Nozzle orifice conventional diameter (mm)

D₁ = Minimum internal passage diameter (mm)

OFFSET ANGLE



DIMENSIONS



Code	D	D1	Capacity - lpm									
			Pressure - bar									
			80	100	140	200	240	280	300	340	380	400
2045 xxAB	0.7	0.6	4.5	5.0	5.9	7.2	7.8	8.5	8.7	9.3	9.8	10.0
2063 xxAB	1.0	0.8	6.3	7.0	8.3	10	10.9	11.8	12.2	13	13.7	14.1
2106 xxAB	1.5	1.2	10.6	11.9	14.2	16.8	18.4	19.8	20.5	21.8	23.1	23.7
2134 xxAB	1.8	1.4	13.4	15.0	17.7	21.2	23.2	25.0	25.9	27.6	29.2	29.9
2162 xxAB	2.0	1.5	16.2	18.1	21.4	25.6	28.0	30.3	31.4	33.4	35.3	36.2
2208 xxAB	2.1	1.8	20.8	23.3	27.5	32.9	36.0	38.9	40.2	42.9	45.3	46.5
2250 xxAB	2.5	1.9	25.0	28.0	33.0	39.5	43.3	46.8	48.4	51.6	54.5	55.9
2320 xxAB	2.8	2.4	32.0	35.8	42.3	50.6	55.4	59.9	62.0	66.0	69.7	71.6
2402 xxAB	3.0	2.5	40.2	45.0	53.2	63.6	69.6	75.2	77.8	82.9	87.6	89.9
2520 xxAB	3.5	2.7	52.0	58.1	68.8	82.2	90.0	97.3	100.7	107.2	113.3	116.3
2642 xxAB	3.8	3.2	64.2	71.8	84.9	101.5	111.2	120.1	124.3	132.3	140.0	143.6
2798 xxAB	4.3	3.6	79.8	89.2	105.6	126.0	138.2	149.3	154.5	164.5	174.0	178.4
2996 xxAB	4.7	4.0	99.6	111.3	131.8	157.5	172.5	186.3	192.8	205.3	217.0	222.7
3112 xxAB	5.0	4.2	112.0	125.2	148.2	177.0	194.0	209.5	216.9	231.0	244.0	250.4
3120 xxAB	5.2	4.4	120.0	134.2	158.7	189.7	207.8	224.5	232.4	247.4	261.5	268.3

ALIGNMENT NOZZLE



Alignment blind nozzle HWZ 01Ax B1 allows for fast and safe positioning of the nipple on the manifold prior to welding. The nipple is aligned in place by means of a straight rod and welded to assure the right jet direction.

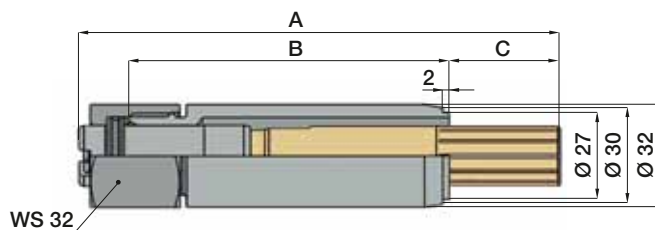
DISASSEMBLY KIT



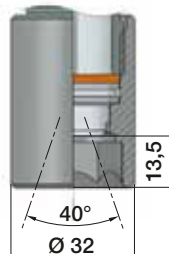
Nozzle tip is strongly secured to the nipple and its removal is not always easy and can cause damage to both parts. HWZ 05A0 B1 disassembling kit allows a safe gripping of the nozzle and makes it easier to apply the tensile strength required to extract it from inside the nipple, for replacement and inspection. The kit is sold separately Ask for the technical data sheet to select the correct tip for the required alignment angle.

NUT	VAW A075 B1								
NIPPLE	ZWA 0032 B2			ZWA 0039 B2			ZWA 0080 B2		
STABILIZER	A	B	C	A	B	C	A	B	C
XHW DG10 T1	115	32	67	115	39	61	115	80	20
XHW DG11 T1	135	32	87	135	39	81	135	80	40
XHW DG20 T1	149	32	101	149	39	95	149	80	54
XHW DG21 T1	169	32	121	169	39	115	169	80	74
XHW DG22 T1	189	32	141	189	39	135	189	39	94

A = Complete Descaling unit Length (mm)
B = Welding Nipple Length (mm)
C = Flow Straightener Protrusion (mm)



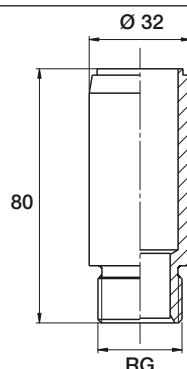
NUT VAW C075 B1



ZWA

WELDING NIPPLES

HW small size nozzles can be assembled on a variety of welding nipples, with same inlet, and different lengths. The precision machined nipple inlet port assures precise positioning of the nozzle flat fan jet to the specified offset angle value of 15° with regard to manifold center line. This makes possible to obtain uniform impact distribution yielding better decaling results.



MATERIALS

B2 Stainless steel AISI 304

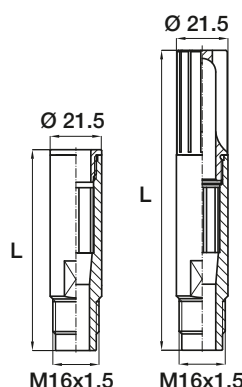
Code	RG inch	L mm	Weight Kg
ZWA 0032 B2	3/4	32	0.08
ZWA 0039 B2	3/4	39	0.10
ZWA 0080 B2	3/4	80	0.23



XHW

FLOW STABILIZER

The flow stabilizer is a critical component for proper descaling, by reducing flow turbulence losses, a larger fraction of the water flow energy can be used for generating impact on the surface to be descaled. The design consists of a cylindrical brass body with a polished inner surface, housing a cast stainless steel flow stabilizer which straightens the liquid path to minimize turbulences. Different length nipples are available, with or without inlet filter. The codes always include a multifin flow straightener.



MATERIALS

T1	Body	Brass
	Filter	Brass
B3	Flow stabilizer	Stainless steel AISI 316

Code	L mm	Weight Kg	Notes
XHW DG 10 T1	76	0.08	without filter
XHW DG 11 T1	96	0.10	without filter
XHW DG 20 T1	110	0.11	with filter
XHW DG 21 T1	130	0.14	with filter
XHW DG 22 T1	150	0.16	with filter

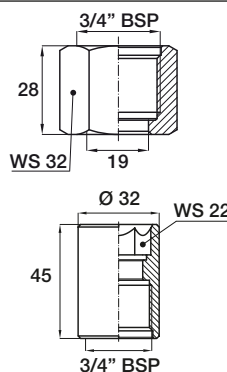


VAW A075 B1

VAW C075 B1

LOCKNUTS

The VAW A075 B1 and VAW C075 B1 locknuts for ZWA series descaling nipples have been designed profiting from a large experience on the field. The sturdy design and the generous dimensions give the maximum protection to the nozzle and the nipple thread. One locknut size fits all standard size ZWA series nipple of any length.



MATERIALS

B1 Stainless steel AISI 303

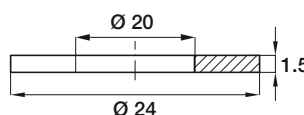
Code	Notes	Weight Kg
VAW A075 B1	Outside exagone	0.09
VAW C075 B1	Built in exagone	0.12



VDA 20C1 T3

GASKET

The VDA 20C1 T3 round gasket provides proper assembly between nozzle and nipple. One size fits all small size ZWA nipple types.



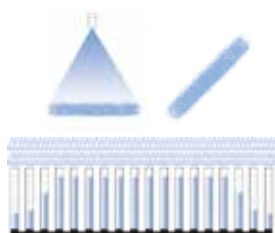
MATERIALS

T3 Copper

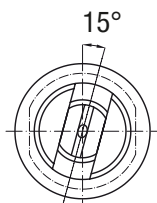
Code
VDA 20C1 T3



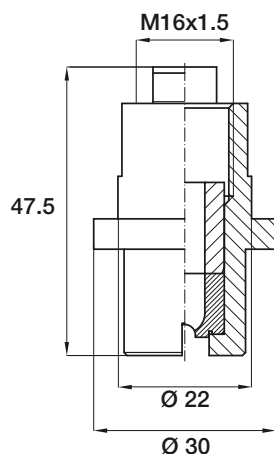
SPRAY PATTERN



OFFSET ANGLE



DIMENSIONS



HIGH IMPACT NOZZLES - SPECIAL SIZE

High Impact nozzles are widely used in hot rolling processes as they provide an adequate impact for a consistent descaling.

The modern design of these nozzles offers the convenience of a more rational alignment system which allows a copper seal to be used between nipple and nozzle tip. The nozzle efficiency is enhanced by means of a carefully designed flow stabilizer, which minimizes turbulence due to sharp direction change at the inlet from the main manifold. Provision is also made for a filter to be mounted at the nozzle inlet, minimizing nozzle clogging and abrasion.

SPRAY ANGLE CODES

HWC	HWE	HWF	HWL
22°	26°	30°	40°

MATERIALS

WEIGHT (Kg)

C1	Body	Stainless steel AISI 303	0.12*
	Insert	Stainless steel AISI 420 hardened	
F1	Body	Stainless steel AISI 303	0.13*
	Insert	Tungsten carbide	

* Average Value

HOW TO ORDER PNR PRODUCTS

Model	Spray Angle	Capacity	Material
HV/AH	C	2045	XX

Order example: **HVC 2045 F1AH**

D = Nozzle orifice conventional diameter (mm)

D₁ = Minimum internal passage diameter (mm)

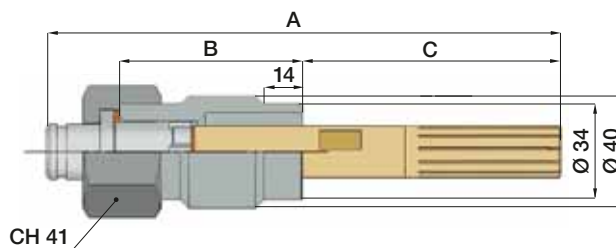
Code	D mm	D1 mm	Capacity - lpm									
			Pressure - bar									
			80	100	140	200	240	280	300	340	380	400
2045 xxAH	0.7	0.6	4.5	5.0	5.9	7.2	7.8	8.5	8.7	9.3	9.8	10.0
2063 xxAH	1.0	0.8	6.3	7.0	8.3	10	10.9	11.8	12.2	13	13.7	14.1
2106 xxAH	1.5	1.2	10.6	11.9	14.2	16.8	18.4	19.8	20.5	21.8	23.1	23.7
2134 xxAH	1.8	1.4	13.4	15.0	17.7	21.2	23.2	25.0	25.9	27.6	29.2	29.9
2162 xxAH	2.0	1.5	16.2	18.1	21.4	25.6	28.0	30.3	31.4	33.4	35.3	36.2
2208 xxAH	2.1	1.8	20.8	23.3	27.5	32.9	36.0	38.9	40.2	42.9	45.3	46.5
2250 xxAH	2.5	1.9	25.0	28.0	33.0	39.5	43.3	46.8	48.4	51.6	54.5	55.9
2320 xxAH	2.8	2.4	32.0	35.8	42.3	50.6	55.4	59.9	62.0	66.0	69.7	71.6
2402 xxAH	3.0	2.5	40.2	45.0	53.2	63.6	69.6	75.2	77.8	82.9	87.6	89.9
2520 xxAH	3.5	2.7	52.0	58.1	68.8	82.2	90.0	97.3	100.7	107.2	113.3	116.3
2642 xxAH	3.8	3.2	64.2	71.8	84.9	101.5	111.2	120.1	124.3	132.3	140.0	143.6
2798 xxAH	4.3	3.6	79.8	89.2	105.6	126.0	138.2	149.3	154.5	164.5	174.0	178.4
2996 xxAH	4.7	4.0	99.6	111.3	131.8	157.5	172.5	186.3	192.8	205.3	217.0	222.7
3112 xxAH	5.0	4.2	112.0	125.2	148.2	177.0	194.0	209.5	216.9	231.0	244.0	250.4
3120 xxAH	5.2	4.4	120.0	134.2	158.7	189.7	207.8	224.5	232.4	247.4	261.5	268.3

CONVERSION TABLE (UE - USA)

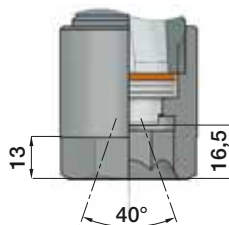
PRESSURE: 1 bar = 14,5 psi	CAPACITY: 1 lpm = 0,264 gpm
-----------------------------------	------------------------------------

NUT	VAW B100 B1					
NIPPLE	ZWC 0062 B2			ZWC 0066 B2		
STABILIZER	A	B	C	A	B	C
XHW DG10 T1	111	62	23	111	66	23
XHW DG11 T1	131	62	43	131	66	43
XHW DG20 T1	145	62	57	145	66	57
XHW DG21 T1	165	62	77	165	66	77
XHW DG22 T1	185	62	97	185	66	97

A = Complete Descaling unit Length (mm)
B = Welding Nipple Length (mm)
C = Flow Straightener Protrusion (mm)



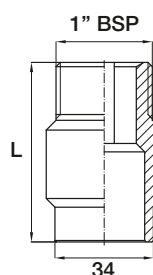
NUT VAW D100 B1



ZWC

WELDING NIPPLES

HV nozzles can be assembled on a series of different nipples, with the same inlet, but with three different lengths. The precision machined nipple inlet port assures precise positioning of the nozzle flat fan jet to the specific offset angle value of 15° with regard to the manifold center line.



MATERIALS

B2 Stainless steel AISI 304

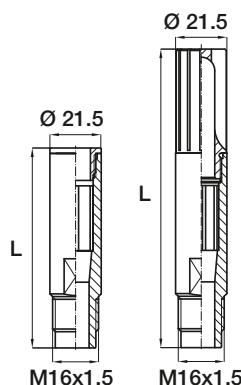
Code	RG inch	L mm	Weight Kg
ZWC 0062 B2	1	62	0.65
ZWC 0066 B2	1	66	0.70



XHW

FLOW STABILIZER

The flow stabilizer is a critical component for proper descaling, by reducing flow turbulence losses, a larger fraction of the water flow energy can be used for generating impact on the surface to be descaled. The design consists of a cylindrical brass body with a polished inner surface, housing a cast stainless steel flow stabilizer which straightens the liquid path to minimize turbulences. Different length stabilizers are available, with or without inlet filter. The codes always include a multifin flow straightener.



MATERIALS

T1	Body	Brass
	Filter	Brass
B3	Flow Stabilizer	Stainless steel AISI 316

Code	L mm	Weight Kg	Notes
XHW DG 10 T1	76	0.08	without filter
XHW DG 11 T1	96	0.10	without filter
XHW DG 20 T1	110	0.11	with filter
XHW DG 21 T1	130	0.14	with filter
XHW DG 22 T1	150	0.16	with filter

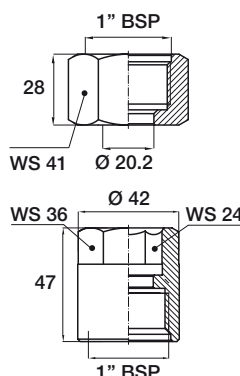


VAW B100 B1

VAW D100 B1

LOCKNUTS

The VAW B100 B1 and VAWD 100 B1 locknuts for ZWC series descaling nipples have been designed profiting from a large experience on the field. The sturdy design and the generous dimensions give the maximum protection to the nozzle and the stabilizer nipple thread. One locknut size fits all standard size ZWB series nipple of any length.



MATERIALS

B1 Stainless steel AISI 303

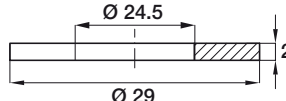
Code	Notes	Weight Kg
VAW B100 B1	Outside exagone	0.16
VAW D100 B1	Built in exagone	0.25



VDA 24C1 T3

GASKET

The VDA 24C1 T3 round gasket provides proper assembly between nozzle and nipple. One size fits all standard size ZWB nipple types.



MATERIALS

T3 Copper

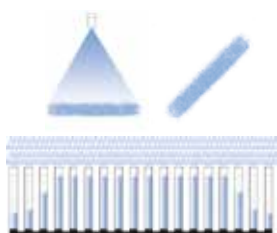
Code
VDA 24C1 T3



HIGH IMPACT NOZZLES - MICRO SIZE

In some plants the centre-to-centre distance among descaling nozzles can be very narrow. In these cases the use of micro-descaling tips avoids the installation of nipples and nozzles or rings onto the spray manifold, which would be difficult, if not impossible, with standard nozzles.

SPRAY PATTERN



SPRAY ANGLE CODES

HWC	HWE	HWF	HWL
22°	26°	30°	40°

MATERIALS

	Body	Stainless steel AISI 303	0.02*
	Insert	Tungsten carbide	

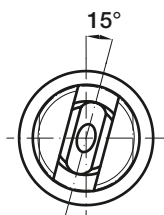
* Average Value

HOW TO ORDER PNR PRODUCTS

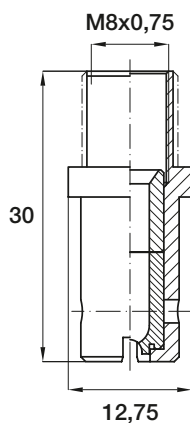
Model	Spray Angle	Capacity	Material
HW/AM	C	2045	XX

Order example: HWC 2045 F1AM

OFFSET ANGLE



DIMENSIONS



D = Nozzle orifice conventional diameter (mm) D_1 = Minimum internal passage diameter (mm)

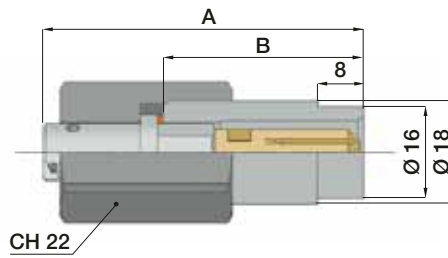
Code	D mm	D1 mm	Capacity - lpm									
			Pressure - bar									
			80	100	140	200	240	280	300	340	380	400
2045 xxAM	0.7	0.6	4.5	5.0	5.9	7.2	7.8	8.5	8.7	9.3	9.8	10.0
2063 xxAM	1.0	0.8	6.3	7.0	8.3	10	10.9	11.8	12.2	13.0	13.7	14.1
2106 xxAM	1.5	1.2	10.6	11.9	14.2	16.8	18.4	19.8	20.5	21.8	23.1	23.7
2134 xxAM	1.8	1.4	13.4	15.0	17.7	21.2	23.2	25.0	25.9	27.6	29.2	29.9
2162 xxAM	2.0	1.5	16.2	18.1	21.4	25.6	28.0	30.3	31.4	33.4	35.3	36.2
2208 xxAM	2.1	1.8	20.8	23.3	27.5	32.9	36.0	38.9	40.2	42.9	45.3	46.5
2250 xxAM	2.5	1.9	25.0	28.0	33.0	39.5	43.3	46.8	48.4	51.6	54.5	55.9

CONVERSION TABLE (UE - USA)

PRESSURE: 1 bar = 14,5 psi	CAPACITY: 1 lpm = 0,264 gpm
----------------------------	-----------------------------

NUT	VAW MM 18 B1		
NIPPLE	ZWM 0035 B2		
STABILIZER	A	B	C
XHW MG20 T1	115	32	67

A = Complete Descaling unit Length (mm)
B = Welding Nipple Length (mm)

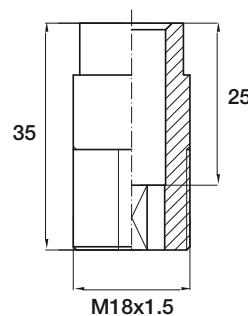


ZWM 0035 B2



WELDING NIPPLE

Micro descaling nozzles can be assembled on the ZWM 0035 B2 nipple, 35 mm. long. PNR can supply on request a series of different length. The precision machined nipple inlet port assures precise positioning of the nozzle flat fan jet to the specified offset angle value of 15 ° with regard to the manifold centre line.



MATERIALS

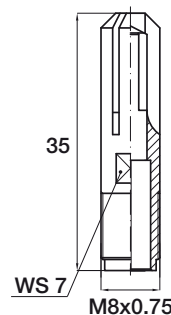
B2	Stainless steel AISI 304		
Code	RG inch	L mm	Weight Kg
ZWM 0035 B2	1.5	35	0.20

XHW MG20 T1



FLOW STABILIZER

The flow stabilizer is a critical component for proper descaling, by reducing flow turbulence losses, a larger fraction of the water flow energy can be used for generating impact on the surface to be descaled. The design consists of a cylindrical brass body with a polished inner surface, housing a cast stainless steel flow stabilizer which straightens the liquid path to minimize turbulences.



MATERIALS

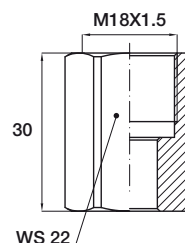
T1	Brass		
Code	L mm	Weight Kg	Notes
XHW MG20 T1	35	0.04	with filter

VAW MM18 B1



LOCKNUT

The sturdy design and the generous dimensions of this locknut give the maximum protection to the nozzle and the nipple thread.



MATERIALS

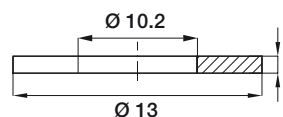
B1	Stainless steel AISI 303		
Code	Weight Kg		
VAW MM18 B1	0.06		

VDA 10A5 T3



GASKET

The VDA 10A5 T3 round gasket provides proper assembly and secure seal between nozzle and nipple.



MATERIALS

T3	Copper	Code
		VDA 10A5 T3



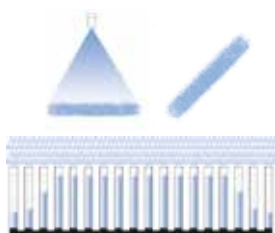
FLAT FAN JET NOZZLE

J type flat fan jet nozzles are used in the pickling process, a surface treatment used to remove impurities, such as discoloring oxide layers or scale on the surface, formed during hot working processes.

These nozzles are available in a wide range of capacities, spray angles and materials.

The tapered thread assures a tight connection and makes it easy to orient the jets in the desired direction. In case of "NPT" connection the model code changes from "J" to "H" but all other parts of the product (thread, spray angle, material) remain unvaried.

SPRAY PATTERN



SPRAY ANGLE CODES

F	M	Q	U	W
30°	45°	60°	90°	120°

MATERIALS CODE

B1	Stainless steel AISI 303
B31	Stainless steel AISI 316L
T1	Brass
D8	PVDF

HOW TO ORDER PNR PRODUCTS

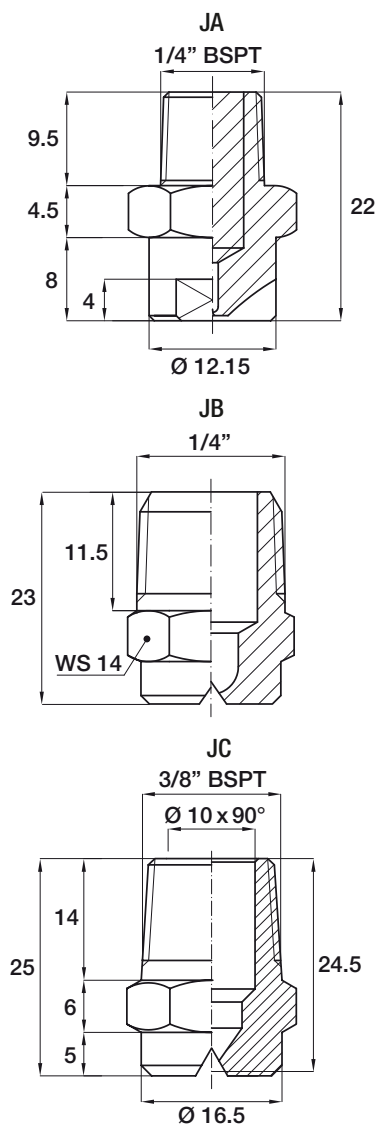
Model	Thread	Spray Angle	Capacity	Material
J	A	C	2045	XX

Order example: **JAC 2045 B3**


DIMENSIONS AND WEIGHTS


Model	Thread	Weight Kg		
		B1 / B31	T1	D8
JA	1/8"	0.010	0.011	0.002
JB	1/4"	0.020	0.021	0.003
JC	3/8"	0.024	0.028	0.004

DIMENSIONS



	JAF	JBF	JCF	Code	Capacity - lpm								
					Pressure - bar								
					0.5	1.0	2.0	3.0	4.0	5.0	7.0	10	20
30°	•			1190	0.78	1.10	1.55	1.90	2.19	2.45	2.90	3.47	4.91
	•			1233	0.95	1.35	1.90	2.33	2.69	3.01	3.56	4.25	6.02
	•	•		1310	1.27	1.79	2.53	3.10	3.58	4.00	4.74	5.66	8.00
	•	•		1385	1.57	2.22	3.14	3.85	4.45	4.97	5.88	7.03	9.94
	•	•		1490	2.00	2.83	4.00	4.90	5.66	6.33	7.48	8.95	12.6
	•	•		1581	2.37	3.35	4.74	5.81	6.71	7.50	8.87	10.6	15.0
		•		1780	3.18	4.50	6.37	7.80	9.01	10.1	11.9	14.2	20.1
		•		1980	4.00	5.66	8.00	9.80	11.3	12.7	15.0	17.9	25.3
		•		2124	5.06	7.16	10.1	12.4	14.3	16.0	18.9	22.6	32.0
		•	•	2153	6.25	8.83	12.5	15.3	17.7	19.8	23.4	27.9	39.5
		•	•	2195	7.96	11.3	15.9	19.5	22.5	25.2	29.8	35.6	50.3
		•	•	2245	10.0	14.1	20.0	24.5	28.3	31.6	37.4	44.7	63.3
			•	2274	11.2	15.8	22.4	27.4	31.6	35.4	41.9	50.0	70.7
			•	2310	12.7	17.9	25.3	31.0	35.8	40.0	47.4	56.6	80.0
			•	2390	15.9	22.5	31.8	39.0	45.0	50.3	59.6	71.2	100.0
			•	2470	19.2	27.1	38.4	47.0	54.3	60.7	71.8	85.8	121.0

	JAM	JBM	JCM	Code	Capacity - lpm								
					Pressure - bar								
					0.5	1.0	2.0	3.0	4.0	5.0	7.0	10	20
45°	•			1190	0.78	1.10	1.55	1.90	2.19	2.45	2.90	3.47	4.91
	•			1233	0.95	1.35	1.90	2.33	2.69	3.01	3.56	4.25	6.02
	•	•		1310	1.27	1.79	2.53	3.10	3.58	4.00	4.74	5.66	8.00
	•	•		1385	1.57	2.22	3.14	3.85	4.45	4.97	5.88	7.03	9.94
	•	•		1490	2.00	2.83	4.00	4.90	5.66	6.33	7.48	8.95	12.6
	•	•		1581	2.37	3.35	4.74	5.81	6.71	7.50	8.87	10.6	15.0
		•		1780	3.18	4.50	6.37	7.80	9.01	10.1	11.9	14.2	20.1
		•	•	1980	4.00	5.66	8.00	9.80	11.3	12.7	15.0	17.9	25.3
		•	•	2124	5.06	7.16	10.1	12.4	14.3	16.0	18.9	22.6	32.0
		•	•	2153	6.25	8.83	12.5	15.3	17.7	19.8	23.4	27.9	39.5
		•	•	2195	7.96	11.3	15.9	19.5	22.5	25.2	29.8	35.6	50.3
		•	•	2245	10.0	14.1	20.0	24.5	28.3	31.6	37.4	44.7	63.3
			•	2274	11.2	15.8	22.4	27.4	31.6	35.4	41.9	50.0	70.7
			•	2310	12.7	17.9	25.3	31.0	35.8	40.0	47.4	56.6	80.0
			•	2390	15.9	22.5	31.8	39.0	45.0	50.3	59.6	71.2	100.0
			•	2470	19.2	27.1	38.4	47.0	54.3	60.7	71.8	85.8	121.0


	JAQ	JBQ	JCQ	Code	Capacity - lpm								
					Pressure - bar								
					0.5	1.0	2.0	3.0	4.0	5.0	7.0	10	20
60°	•	•		1190	0.78	1.10	1.55	1.90	2.19	2.45	2.90	3.47	4.91
	•	•		1233	0.95	1.35	1.90	2.33	2.69	3.01	3.56	4.25	6.02
	•	•		1310	1.27	1.79	2.53	3.10	3.58	4.00	4.74	5.66	8.00
	•	•		1385	1.57	2.22	3.14	3.85	4.45	4.97	5.88	7.03	9.94
	•	•	•	1490	2.00	2.83	4.00	4.90	5.66	6.33	7.48	8.95	12.6
	•	•	•	1581	2.37	3.35	4.74	5.81	6.71	7.50	8.87	10.6	15.0
		•	•	1780	3.18	4.50	6.37	7.80	9.01	10.1	11.9	14.2	20.1
		•	•	1980	4.00	5.66	8.00	9.80	11.3	12.7	15.0	17.9	25.3
		•	•	2124	5.06	7.16	10.1	12.4	14.3	16.0	18.9	22.6	32.0
		•	•	2153	6.25	8.83	12.5	15.3	17.7	19.8	23.4	27.9	39.5
		•	•	2195	7.96	11.3	15.9	19.5	22.5	25.2	29.8	35.6	50.3
		•	•	2245	10.0	14.1	20.0	24.5	28.3	31.6	37.4	44.7	63.3
		•	•	2274	11.2	15.8	22.4	27.4	31.6	35.4	41.9	50.0	70.7
			•	2310	12.7	17.9	25.3	31.0	35.8	40.0	47.4	56.6	80.0
			•	2390	15.9	22.5	31.8	39.0	45.0	50.3	59.6	71.2	100.0
			•	2470	19.2	27.1	38.4	47.0	54.3	60.7	71.8	85.8	121.0


CONVERSION TABLE (UE - USA)

PRESSURE: 1 bar = 14,5 psi

CAPACITY: 1 lpm = 0,264 gpm

▷ continued on page 56

	JAU	JBU	JCU	Code	Capacity - lpm								
					Pressure - bar								
					0.5	1.0	2.0	3.0	4.0	5.0	7.0	10	20
90°	•			1190	0.78	1.10	1.55	1.90	2.19	2.45	2.90	3.47	4.91
	•			1233	0.95	1.35	1.90	2.33	2.69	3.01	3.56	4.25	6.02
	•	•		1310	1.27	1.79	2.53	3.10	3.58	4.00	4.74	5.66	8.00
	•	•		1385	1.57	2.22	3.14	3.85	4.45	4.97	5.88	7.03	9.94
	•	•		1490	2.00	2.83	4.00	4.90	5.66	6.33	7.48	8.95	12.6
	•	•	•	1581	2.37	3.35	4.74	5.81	6.71	7.50	8.87	10.6	15.0
	•	•	•	1780	3.18	4.50	6.37	7.80	9.01	10.1	11.9	14.2	20.1
		•	•	1980	4.00	5.66	8.00	9.80	11.3	12.7	15.0	17.9	25.3
		•	•	2124	5.06	7.16	10.1	12.4	14.3	16.0	18.9	22.6	32.0
		•	•	2153	6.25	8.83	12.5	15.3	17.7	19.8	23.4	27.9	39.5
		•	•	2195	7.96	11.3	15.9	19.5	22.5	25.2	29.8	35.6	50.3
		•	•	2245	10.0	14.1	20.0	24.5	28.3	31.6	37.4	44.7	63.3
		•	•	2274	11.2	15.8	22.4	27.4	31.6	35.4	41.9	50.0	70.7
			•	2310	12.7	17.9	25.3	31.0	35.8	40.0	47.4	56.6	80.0
			•	2390	15.9	22.5	31.8	39.0	45.0	50.3	59.6	71.2	100.0
			•	2470	19.2	27.1	38.4	47.0	54.3	60.7	71.8	85.8	121.0

	JAW	JBW	JCW	Code	Capacity - lpm								
					Pressure - bar								
					0.5	1.0	2.0	3.0	4.0	5.0	7.0	10	20
120°	•			1190	0.78	1.10	1.55	1.90	2.19	2.45	2.90	3.47	4.91
	•	•		1233	0.95	1.35	1.90	2.33	2.69	3.01	3.56	4.25	6.02
	•	•		1310	1.27	1.79	2.53	3.10	3.58	4.00	4.74	5.66	8.00
	•	•	•	1385	1.57	2.22	3.14	3.85	4.45	4.97	5.88	7.03	9.94
	•	•	•	1490	2.00	2.83	4.00	4.90	5.66	6.33	7.48	8.95	12.6
	•	•	•	1581	2.37	3.35	4.74	5.81	6.71	7.50	8.87	10.6	15.0
	•	•	•	1780	3.18	4.50	6.37	7.80	9.01	10.1	11.9	14.2	20.1
	•	•	•	1980	4.00	5.66	8.00	9.80	11.3	12.7	15.0	17.9	25.3
		•	•	2124	5.06	7.16	10.1	12.4	14.3	16.0	18.9	22.6	32.0
		•	•	2153	6.25	8.83	12.5	15.3	17.7	19.8	23.4	27.9	39.5
		•	•	2195	7.96	11.3	15.9	19.5	22.5	25.2	29.8	35.6	50.3
		•	•	2245	10.0	14.1	20.0	24.5	28.3	31.6	37.4	44.7	63.3
			•	2274	11.2	15.8	22.4	27.4	31.6	35.4	41.9	50.0	70.7
			•	2310	12.7	17.9	25.3	31.0	35.8	40.0	47.4	56.6	80.0
			•	2390	15.9	22.5	31.8	39.0	45.0	50.3	59.6	71.2	100.0
			•	2470	19.2	27.1	38.4	47.0	54.3	60.7	71.8	85.8	121.0

CONVERSION TABLE (UE - USA)

PRESSURE: 1 bar = 14,5 psi

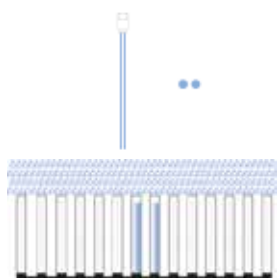
CAPACITY: 1 lpm = 0,264 gpm



ROLL COOLING NOZZLE

KYA type special flat fan jet nozzles are the best solution to cool forged steel rolls on continuous casting machines with high spray width values. The direction of the two jets is designed to obtain maximum cooling efficiency over a long reach.

SPRAY PATTERN



MATERIALS

T1	Brass
B31	Stainless steel AISI 316L

HOW TO ORDER PNR PRODUCTS

Model	Capacity	Material	Construction	Variation
KYA	A	C	Y	Z

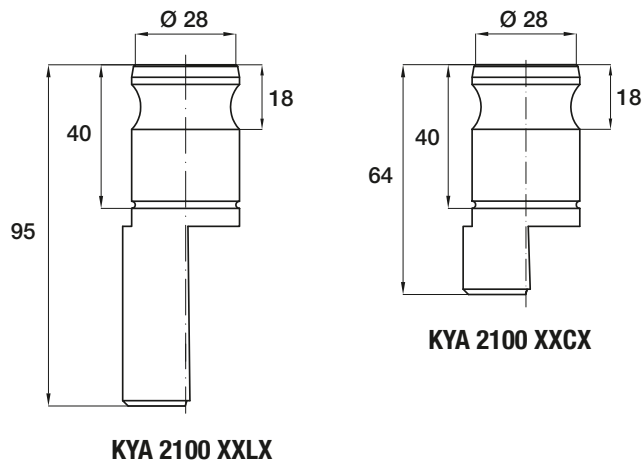
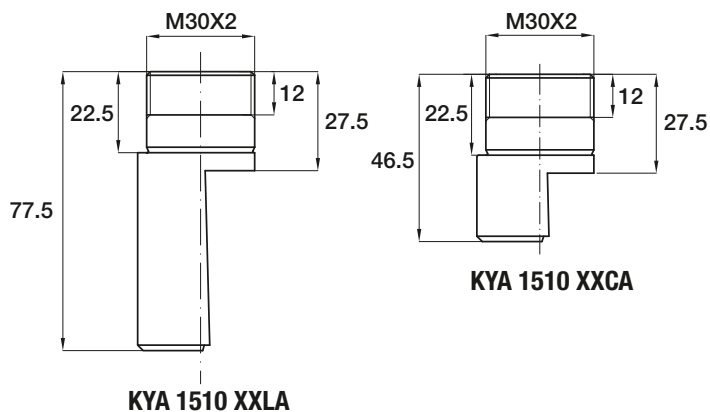
Order example: **UEA D020 V7 SG**

CONSTRUCTION: Y

- **C** standard
- **L** long body

VARIATION: Z

- **A** metric thread M30x2
- **X** quick coupling



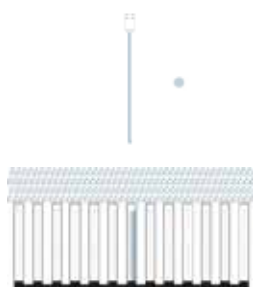
Code	Capacity - lpm								Weight	
	Pressure - bar								Kg	
	1.0	2.0	3.0	4.0	5.0	6.0	7.0	10.0	T1	B31
KYA 1510 xx	2.94	4.16	5.10	5.89	6.58	7.21	7.79	9.31	0,28	0,26
KYA 2107 xx	6.18	8.74	10.70	12.40	13.80	15.10	16.30	19.50	0,35	0,33

CONVERSION TABLE (UE - USA)

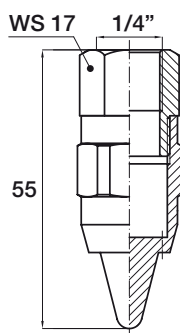
PRESSURE: 1 bar = 14,5 psi	CAPACITY: 1 lpm = 0,264 gpm
-----------------------------------	------------------------------------



SPRAY PATTERN



DIMENSIONS



AIR KNIFE COOLING SYSTEMS ROUND JET

These efficient blow-off nozzles deliver a highly laminar stream of air with a powerful impact force. The laminar nature of the input air flow minimizes both the turbulence associated with the surrounding air that is entrained in the fast moving stream, and the level of audible noise produced. The body is made either of aluminium protected by a chemical nickel-plating coating, for applications requiring lightweight nozzles, or of stainless steel 316L for heavy duty. The table here below gives the values of air consumption at different operating pressures, whereas the graph shows the noise level as a function of location relative to the nozzle, measured at 2 bar.

MATERIALS

V7	Aluminium, chemical nickel-plating LT = 95 °C - LP = 15 bar
B31	Stainless steel AISI 316L LT = 110 °C - LP = 15 bar

LT: Maximum operating temperature

LP : Maximum operating pressure

HOW TO ORDER PNR PRODUCTS

Model	Version	Material	Construction	Variation
UEA	D020	XX	Y	Z

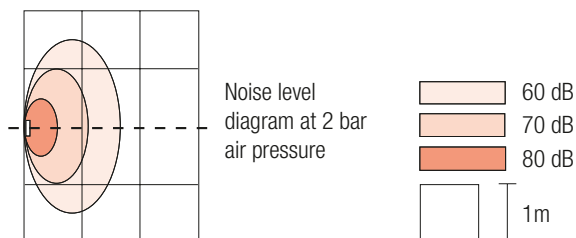
Order example: **UEA D020 V7SG**

CONSTRUCTION: Y

VARIATION: Z

- **S** standard (Female connection)
- **M** male Connection
- **G** cylindrical gas thread (BSPP)
- **N** conic gas thread

These air blowers meet the requirements of American OSHA regulation



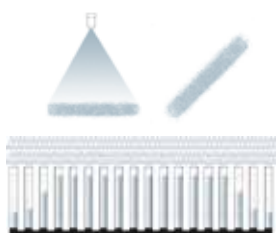
Code	RF	Capacity Air - Nm³/h					Weight
		Pressure - bar					
	inch	2.0	3.0	4.0	5.0	6.0	Kg
UEA D020 B31xx	1/4	15	20	25	31	35	0.05
UEA D020 V7xx		15	20	25	31	35	0.03

CONVERSION TABLE (UE - USA)

PRESSURE: 1 bar = 14,5 psi	CAPACITY: 1 Nm³/h = 0,59 cfm
----------------------------	------------------------------

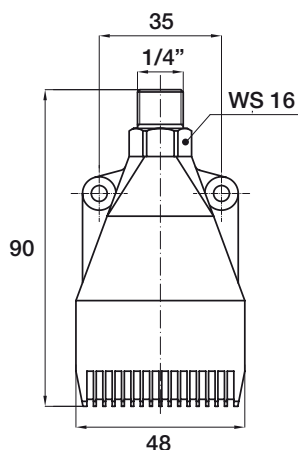


SPRAY PATTERN

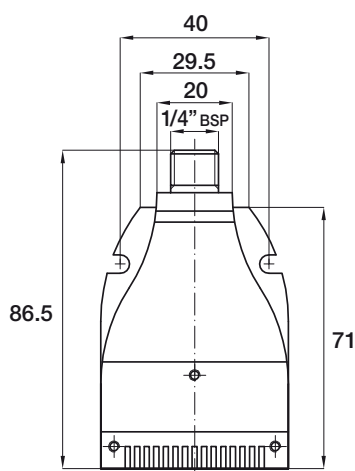


DIMENSIONS

VERSION IN E31



VERSION IN V7



AIR KNIFE COOLING SYSTEMS FLAT FAN JET

These blow-off nozzles, containing multiple air channels, are used in applications where a flat fan jet of air with high impact velocity is required. Their design produces a uniform layer of air with low noise emission. Typical applications include cooling, drying, cleaning, and the movement of objects on a conveyor belt. The nozzles can be ganged together or on a pipe manifold to achieve wide coverage.

MATERIALS

E31	Polyacetal Resin (POM) LT = 80 °C - LP = 5 bar
V7	Aluminium, chemical nickel-plated LT = 95 °C - LP = 15 bar

LT: Maximum operating temperature

LP : Maximum operating pressure

HOW TO ORDER PNR PRODUCTS

Model	Version	Material	Construction	Variation
UEA	L022	XX	Y	Z

Order example: **UEA L022 V7SG**

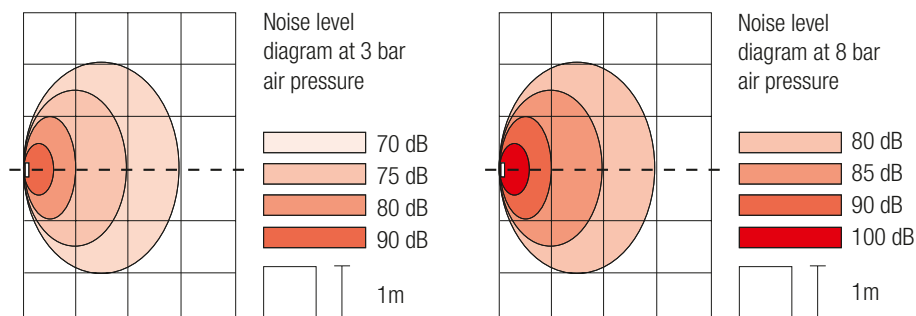
CONSTRUCTION: Y

- **S** standard

VARIATION: Z

- **G** cylindrical gas thread (BSPP)
- **N** conic gas thread

These air blowers meet the requirements of American OSHA regulation



See list of abbreviations - legenda at page 3.

Code	RG	Capacity Air - Nm³/h					Weight
	inch	Pressure - bar					
		1.0	2.0	3.0	4.0	5.0	Kg
UEA L022 E31xx	1/4	10	17	22	28	33	0.03
UEA L022 V7xx		10	17	22	28	33	0.07

CONVERSION TABLE (UE - USA)

PRESSURE: 1 bar = 14,5 psi

CAPACITY: 1 Nm³/h = 0,59 cfm

AIR KNIFE COOLING SYSTEMS BAR BLOWERS

UEB air knives, used for rolls cooling, deliver a laminar flow of compressed air along their entire length with a powerful impact force, low speed and reduced noise level. Their particular design, based on the Coanda effect, allows to place the outlet orifice in a safe position and protect it from any possible damage.

UEB Air knives are manufactured in four different standard lengths and can be ganged together to create air barriers of any desired length.

The jet flow leaving the nozzle orifice curves away following the radiused profile and leaves the body of the air knife with a 90° angle from the initial jet direction, as shown in the drawing. This feature allows to place the nozzle orifice in a totally safe position thus making these air knives the perfect choice to use on conveyor belts, where the products being conveyed may oscillate and damage an ordinary blow-off system.

MATERIALS

B31	Body and upper plate	Stainless steel AISI 316 LT = 110 °C - LP = 7 bar
	Body	Aluminium, chemical nickel-plated
V7	Upper plate	Nickel plated steel LT = 95 °C - LP = 7 bar

LT: Maximum operating temperature

LP : Maximum operating pressure

HOW TO ORDER PNR PRODUCTS

Model	Length	Material	Construction	Variation
UEB	150	XX	Y	Z

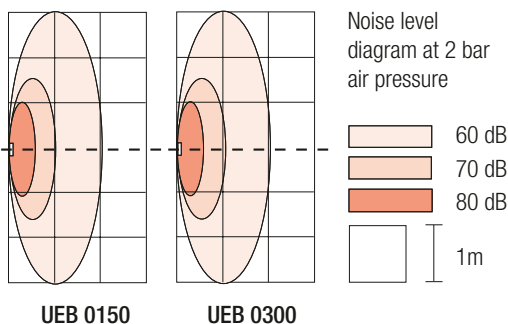
Order example: **UEB 0150 V7SG**

CONSTRUCTION: Y

- **S** standard

VARIATION: Z

- **G** cylindrical gas thread (BSPP)
- **N** conic gas thread (NPT)



The table below shows the air capacity as a function of the air pressure, whereas the graphs show the noise level as a function of the front and side distances from the nozzle, at an operating air pressure of 2 bar. As the air exiting the nozzle orifice drags along ambient air, the air blade produced by the nozzle (AIR OUT) has a higher flow rate which is a multiple of the entering air flow (AIR IN).

Code	RF	Capacity Air - Nm³/h										Dimensions mm			Weight kg
	inch	Pressure - bar													
		2.0		3.0		4.0		5.0		6.0		H	L	S	
		AI	AO	AI	AO	AI	AO	AI	AO	AI	AO				
UEB 0150 V7xx	1/4	0.26	4.7	0.34	6	0.42	7.1	0.51	8.6	0.6	10.6	30	150	-	0.30
UEB 0300 V7xx		0.52	9.4	0.68	12	0.84	14.2	1.02	17.2	1.2	21.2		300	-	0.70
UEB 0450 V7xx		0.78	14.1	1.03	18	12.6	21.3	1.53	25.8	1.8	31.8		450	270	0.90
UEB 0600 V7xx		1.03	18.7	1.4	24	1.68	28.4	2.04	34.4	2.4	42.4		600	300	1.40

CONVERSION TABLE (UE - USA)

PRESSURE: 1 bar = 14,5 psi

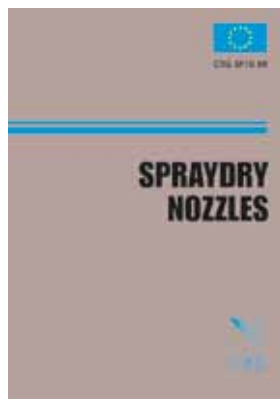
CAPACITY: 1 Nm³/h = 0,59 cfm

In addition to the general purpose spray nozzles found in this catalogue, PNR manufactures a wide range of other products and systems for liquid flow and fluid control; suitable for most modern industrial processes. These high quality products can be found in the following catalogues:



CTG AC BR Accessories Catalogue

A complete range of nipples, clamps, swivel joints and everything that helps you to easily assemble, align and service your spraying systems. Air blowers, mixing eductors, filters, cleaning guns and lances, hose reels, steam heaters, pressure tanks, quick couplings and more.



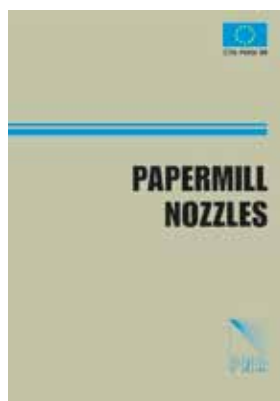
CTG SP BR Spraydry nozzles

High pressure or air assisted precision nozzles manufactured with top quality stainless steel housings and tungsten carbide internals. A complete line of nozzles to retrofit existing plants at competitive prices. Only the highest quality materials and the most precise machining are employed in the manufacture of our nozzles, to assure accurate results and consistent wear.



CTG LS BR Tank washing systems

Everything from the simple fixed sprayballs and pintle nozzles to the twin-axis wash heads. Reaction driven, water driven and electric or pneumatic motor driven. Professional inside surface cleaning of industrial tanks with the latest technology, together with state of the art accessories.



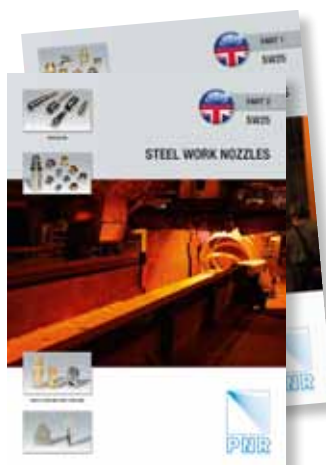
CTG PM BR Papermill products

A sixteen page catalogue showing products specifically developed for use on paper making machines, and paper mill processes. These include our patented disc nozzle for self-cleaning pipes, needle nozzles with sapphire and ruby orifices and oscillating pipes.



CTG AZ BR Air assisted atomizers

Ultrasonic, classic and automatic atomisers for the finest atomisation in any process. High quality machining and tight quality control assure a professional result for your system. Control cabinets aid easy construction of complete humidification systems.



CTG SW BR Steelwork nozzles

A complete range of nozzles for steelwork applications, including continuous casting air atomisers and conventional nozzles, descaling nozzles for high pressure systems, fixed position dovetail tips and coke quenching high capacity flanged nozzles to name a few.



CTG LN BR Gas cooling lances

Spillback or air assisted lances for gas cooling processes in steelworks, cement plants and other industrial applications. We can supply spare parts, retrofit your system or even supply a complete system, PLC driven, to upgrade tower performances to the latest technical standards



CTG FF BR Fire fighting products

Everything for fixed and mobile foam systems, bladder tanks, any kind of foam mixer, monitors, foam lances and foam nozzles, mobile trailers for foam systems, pressure water nozzles, water mist nozzles and hydrants.

This image shows a full page of blank graph paper. The grid consists of small, uniform squares formed by thin, light gray lines. There are no margins, text, or other markings on the page.





www.pnr.eu



Printed in EU 0214

Our products are distributed through:

PNR America
PNR Baltic
PNR Benelux
PNR China
PNR Deutschland
PNR France
PNR Italia
PNR Mexico
PNR Nordic
PNR Taiwan
PNR United Kingdom

We are also represented in:

Argentina
Australia
Austria
Bosnia-Herzegovina
Brazil
Bulgaria
Canada
Denmark

Greece
Hungary
India
Indonesia
Iran
Norway
New Zealand
Poland

Portugal
Romania
Singapore
Spain
South Africa
Thailand
Turkey
Ukraine